

Sito: luxmar.it  
Tel: +39335694617  
Email: info@luxmar.it Indirizzo: Via Pontina km 108  
Mortacino Terracina side Lt 040149

TEXT

TE  
XT









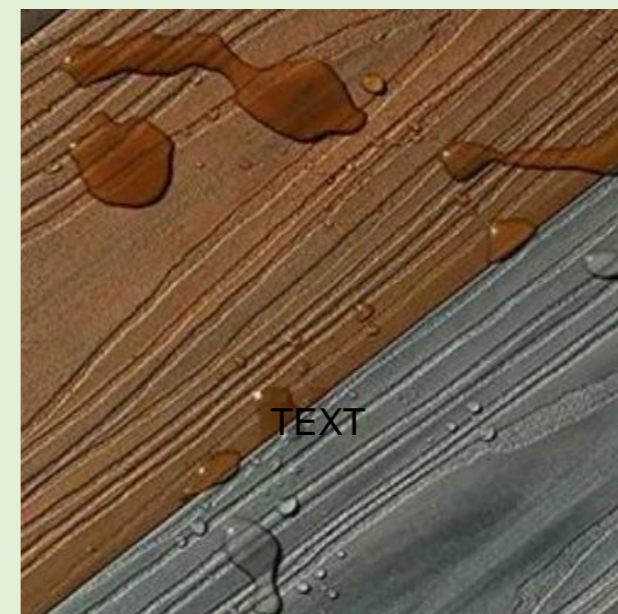
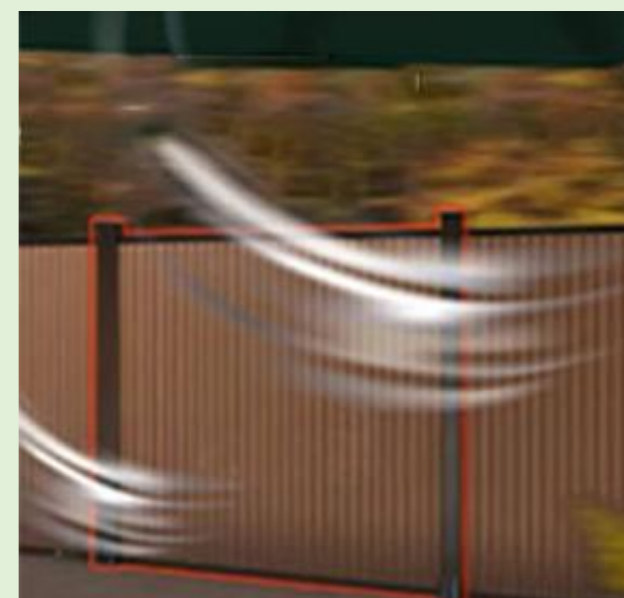
PRODUCT  
BROCHURE





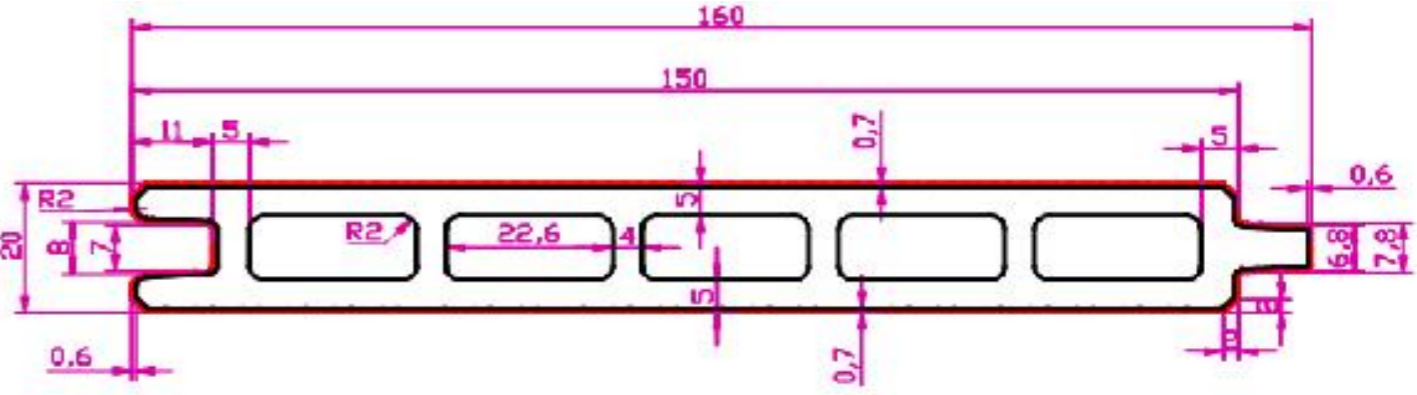
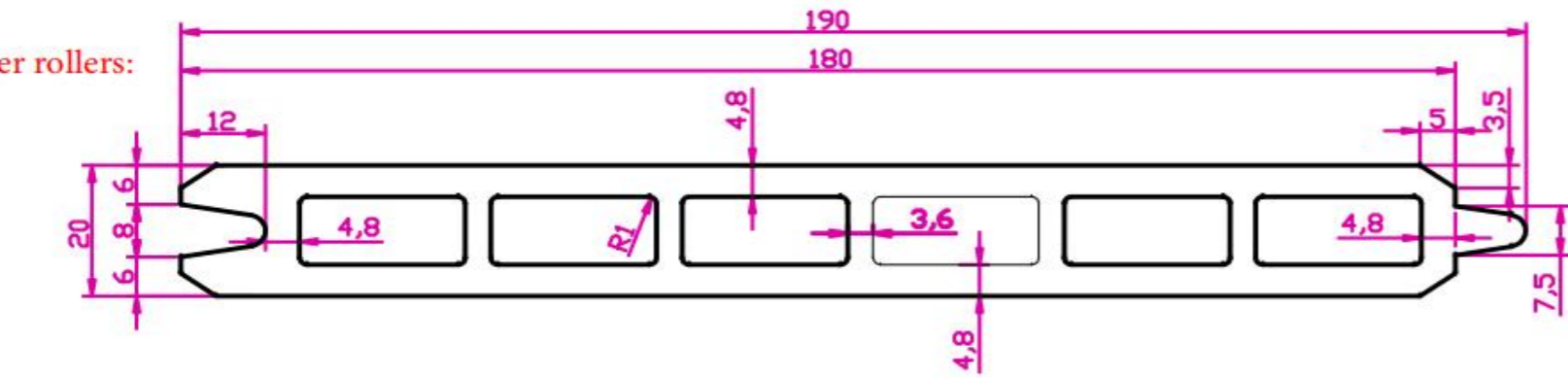
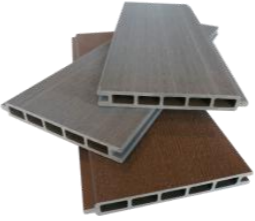
## VANTAGGI DEL WPC

-  **Environmentally friendly**
-  **Resistenti al ambiente e anti corrosioni:** Resistenti ai raggi UV, vento, pioggia e temperature estreme.
-  **Facili da mantenere :** non hanno bisogno ne di pittura ne di rivestimento.
-  **Ignifugo:** Per una maggiore sicurezza.
-  **Forte e duraturo:** Può resistere a tifoni di categoria 9.
-  **Vari colori disponibili**



# Come è stato migliorato il coestruso?

Se comparata alla doga classica, la superficie della doga coestrusa è coperta da strati di HDPE, la quale aumenta la resistenza ai graffi, all'acqua e ne aumenta la durabilità.



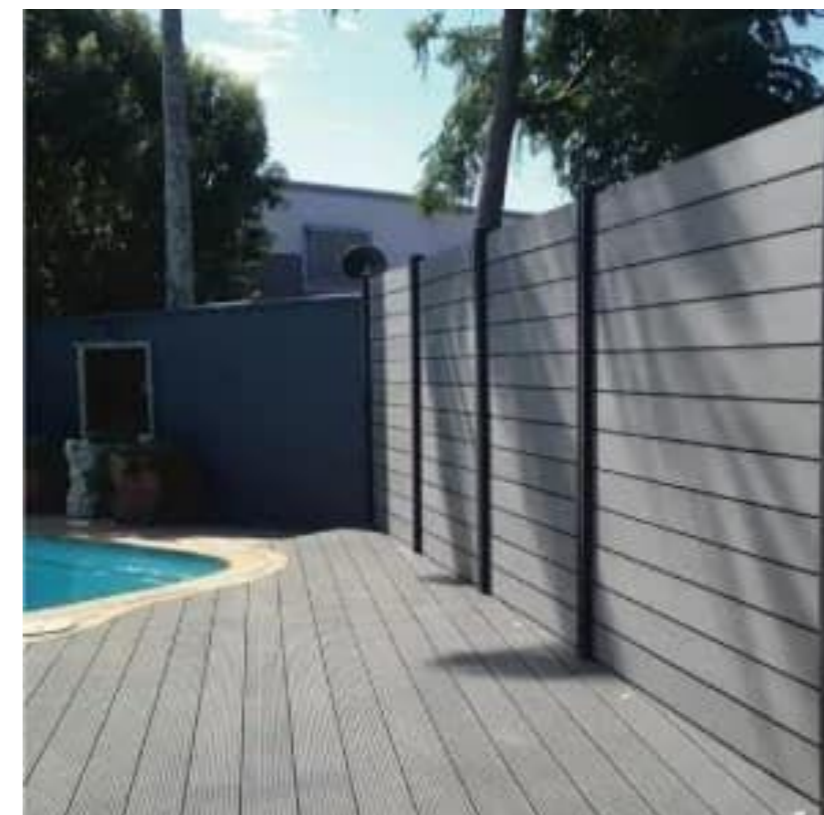
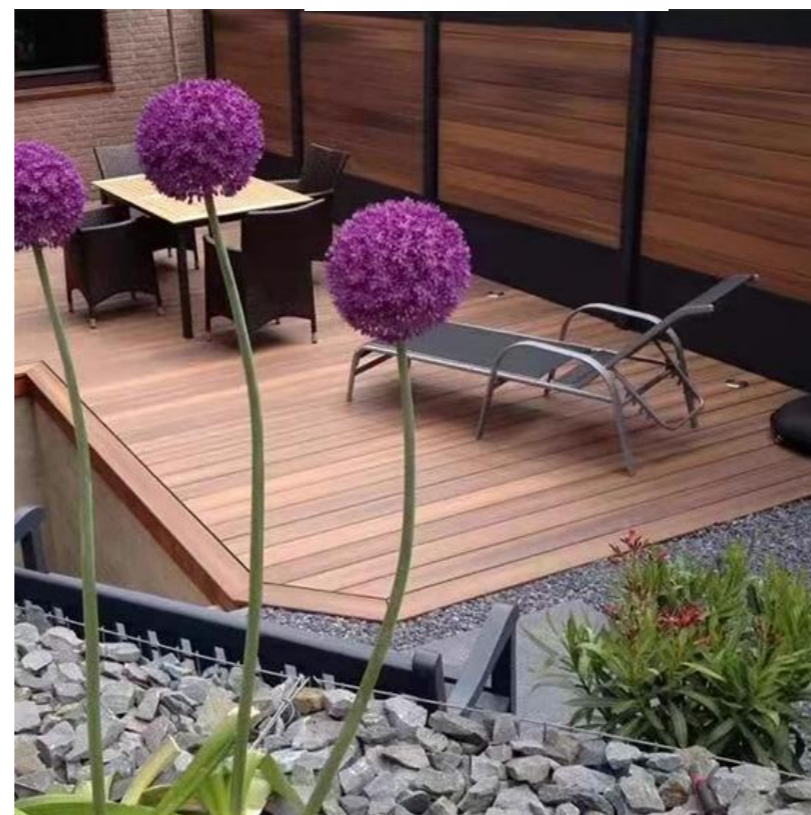
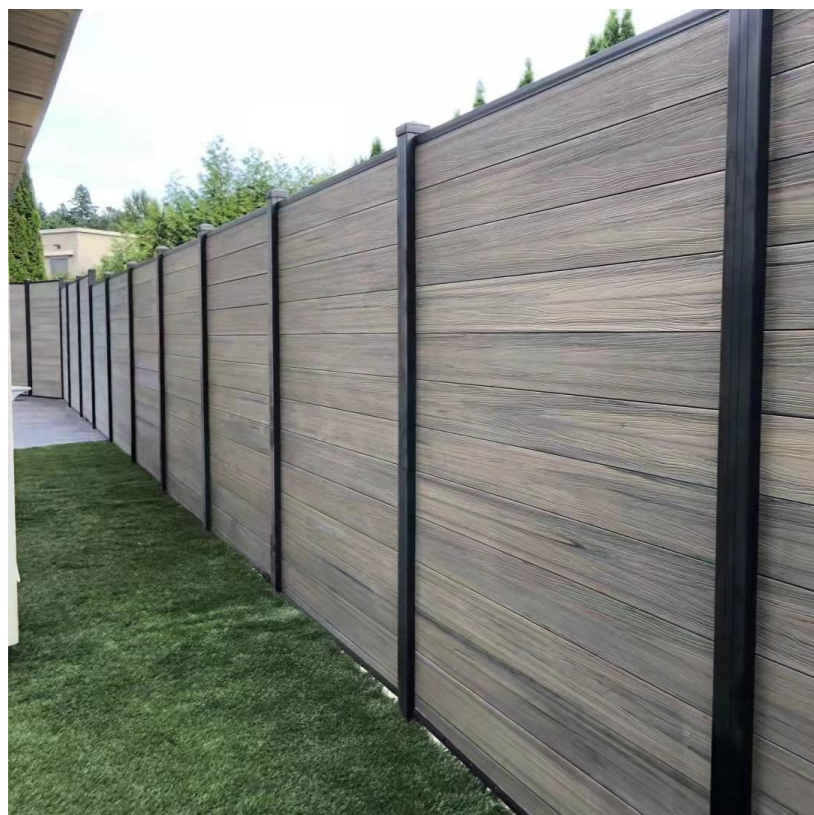
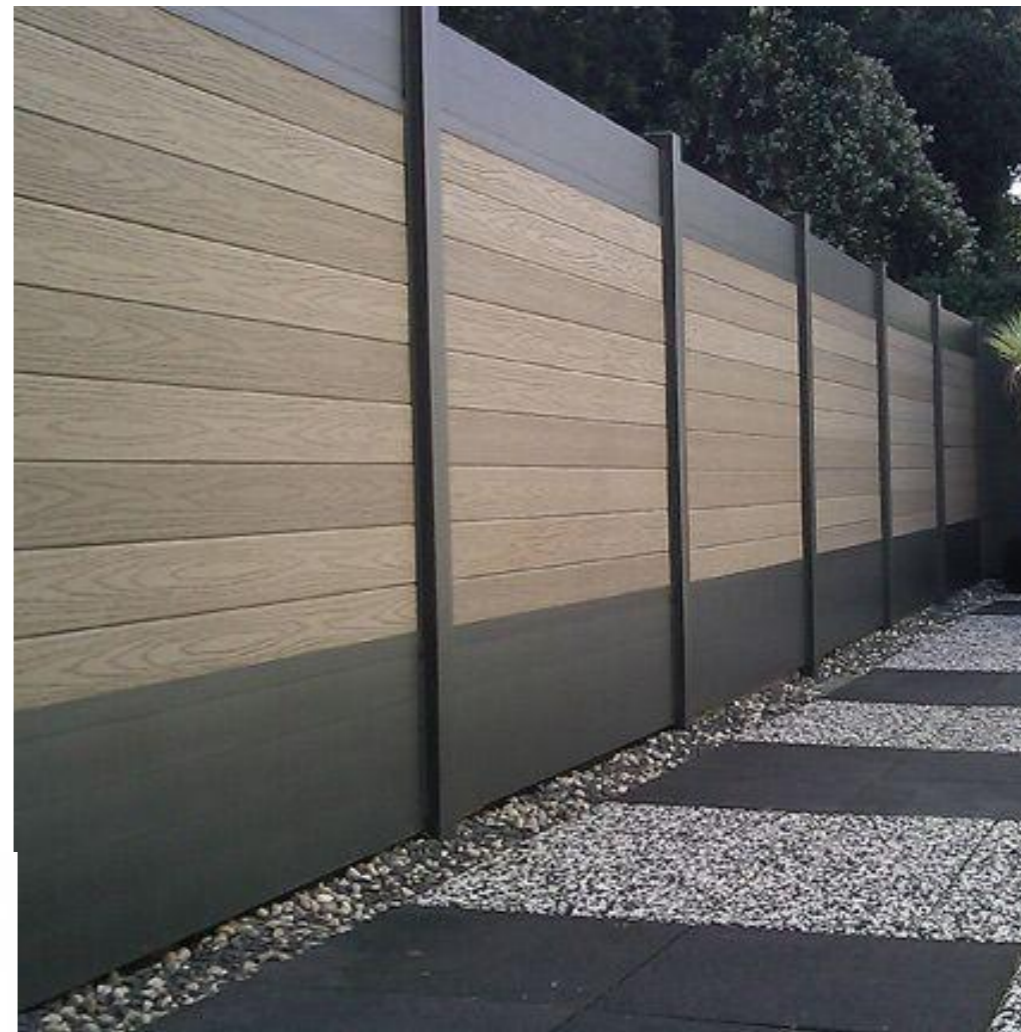
Doga classica

Doga coestrusa



**luxmar**

# PRPRODUCT DISPLAY — Completamente chiusa



**LUXMAR**

Semi chiusa; Semi Aperta

Luce a LED



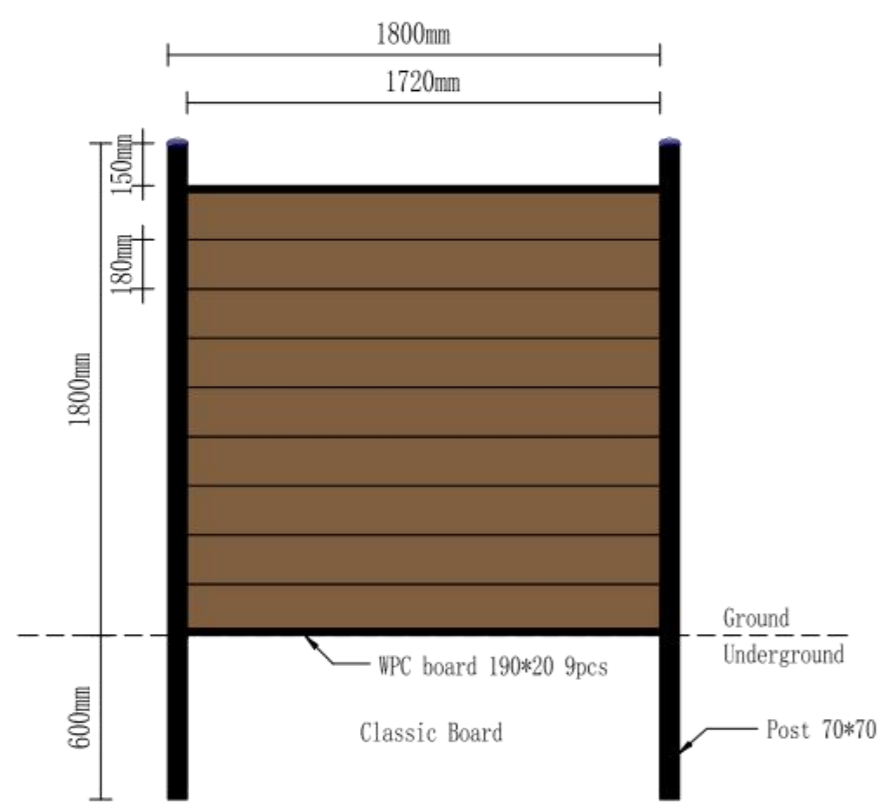
**luxmar**

# Lavorazione Laser + materiale WPC



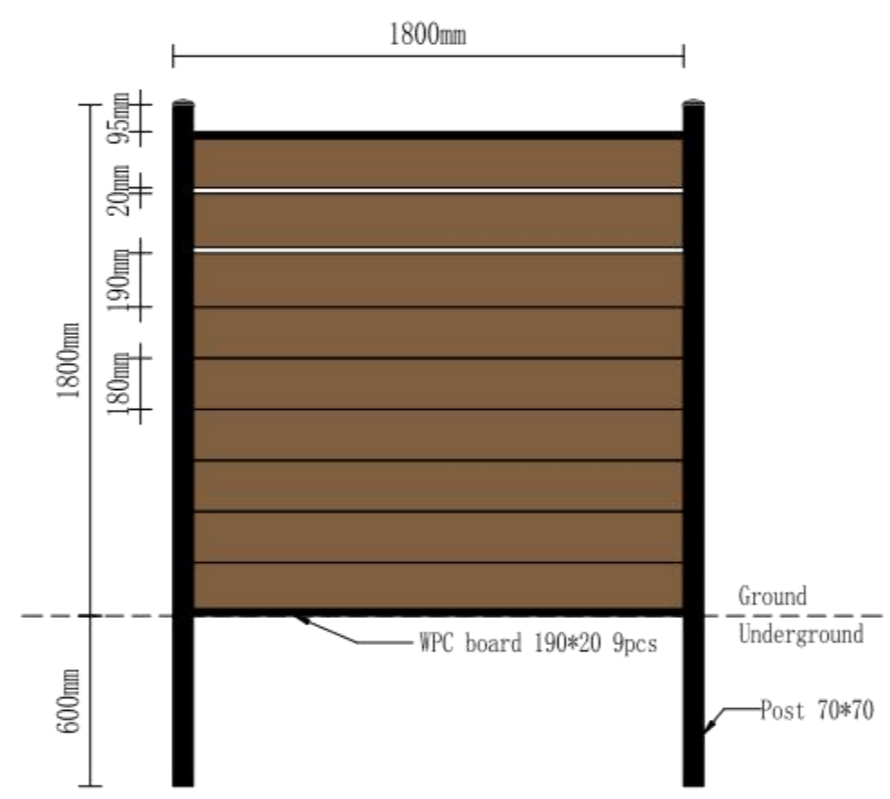
Tipi di stili

Venere



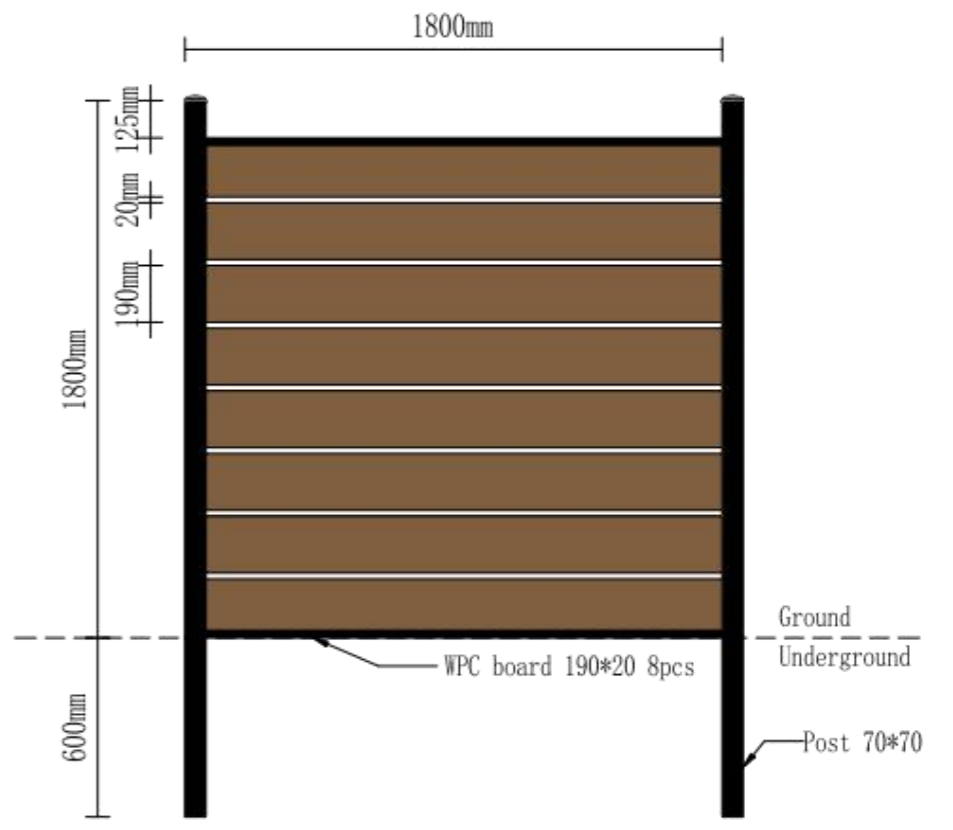
Interamente chiuso

Marte



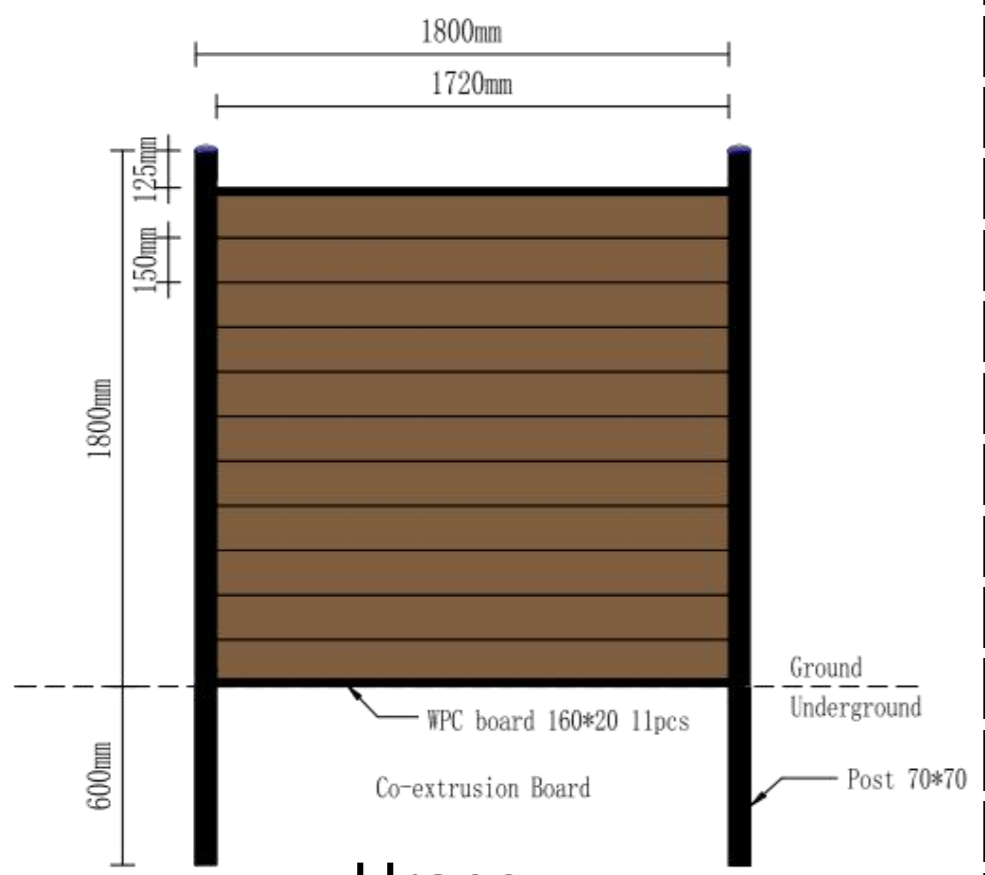
Semi Chiuso

Giove

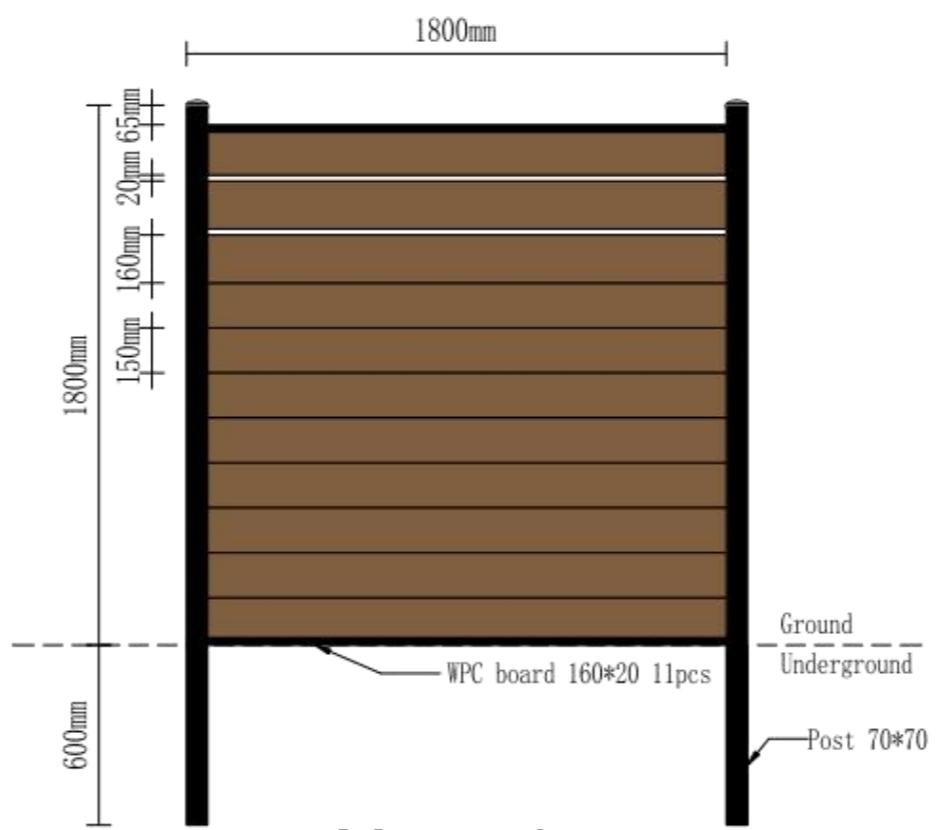


Semi Aperto

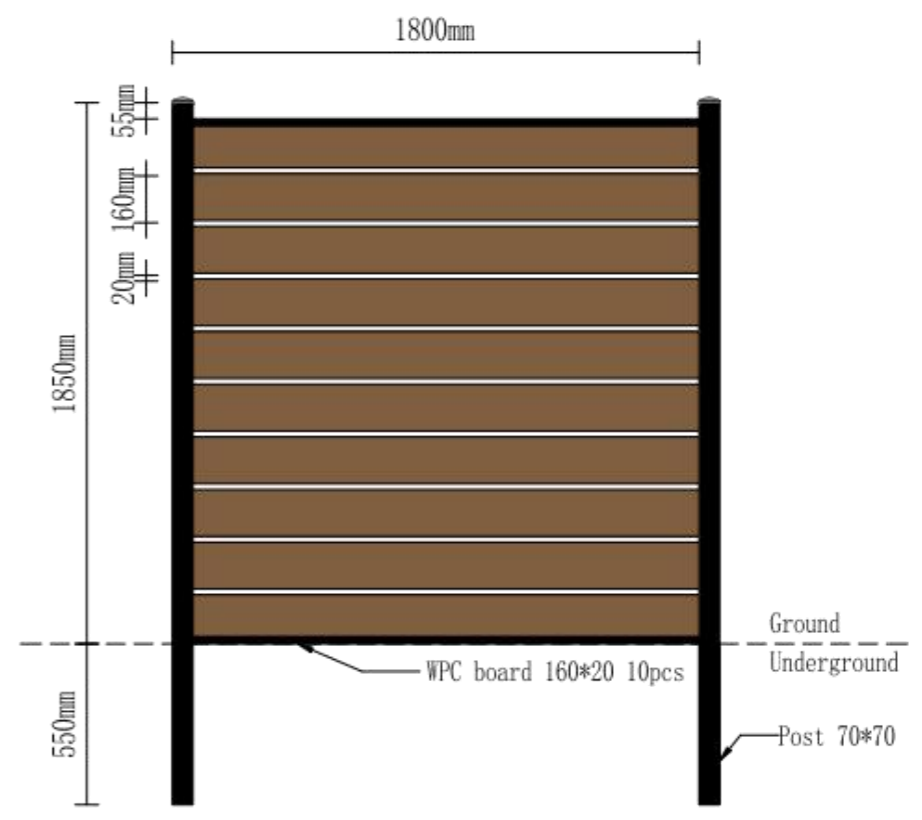
Urano



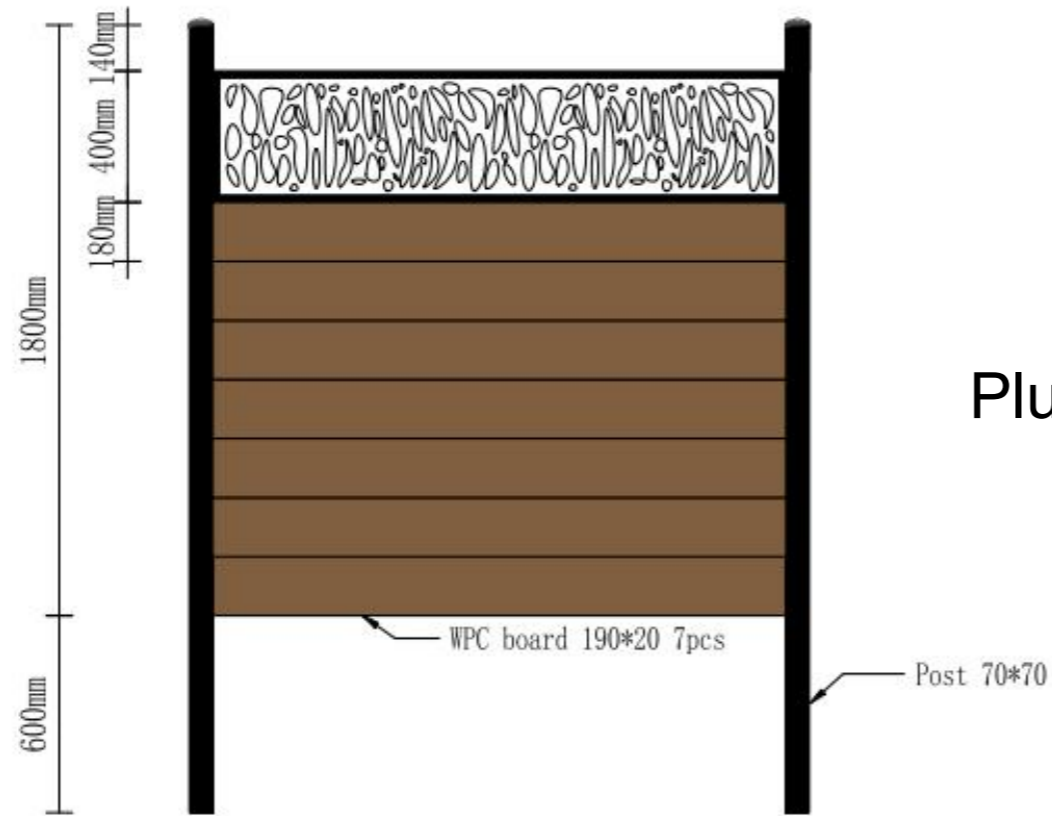
Mercurio



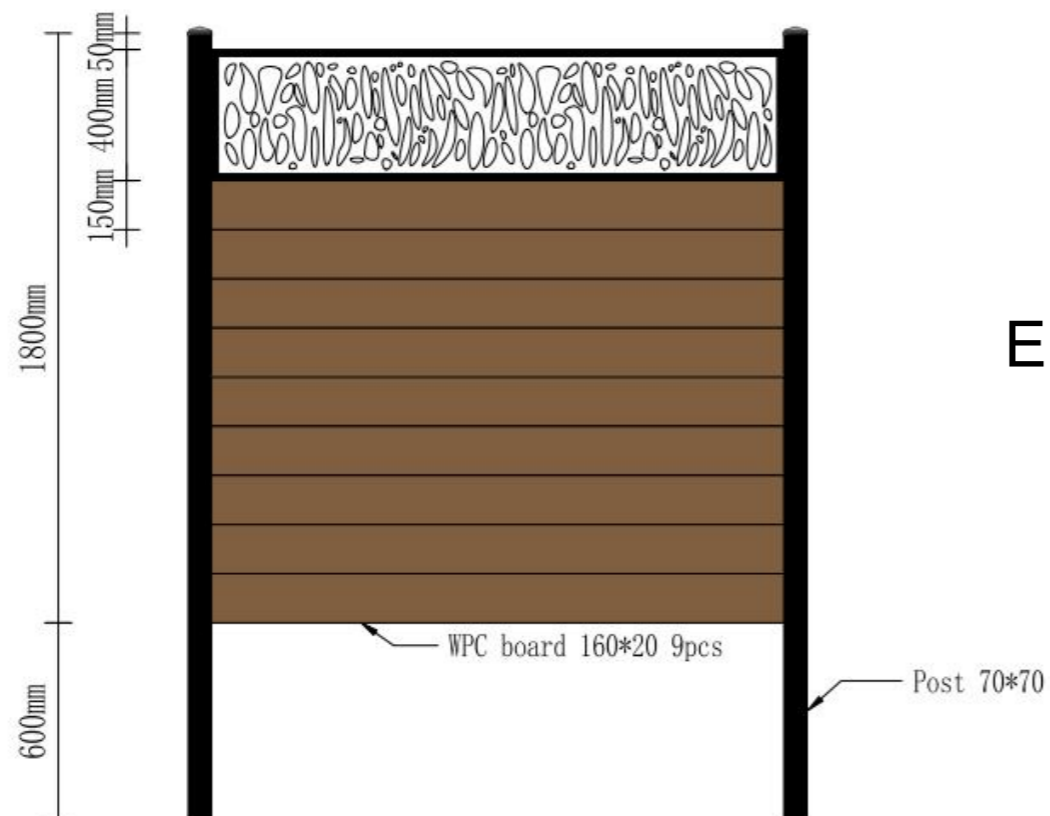
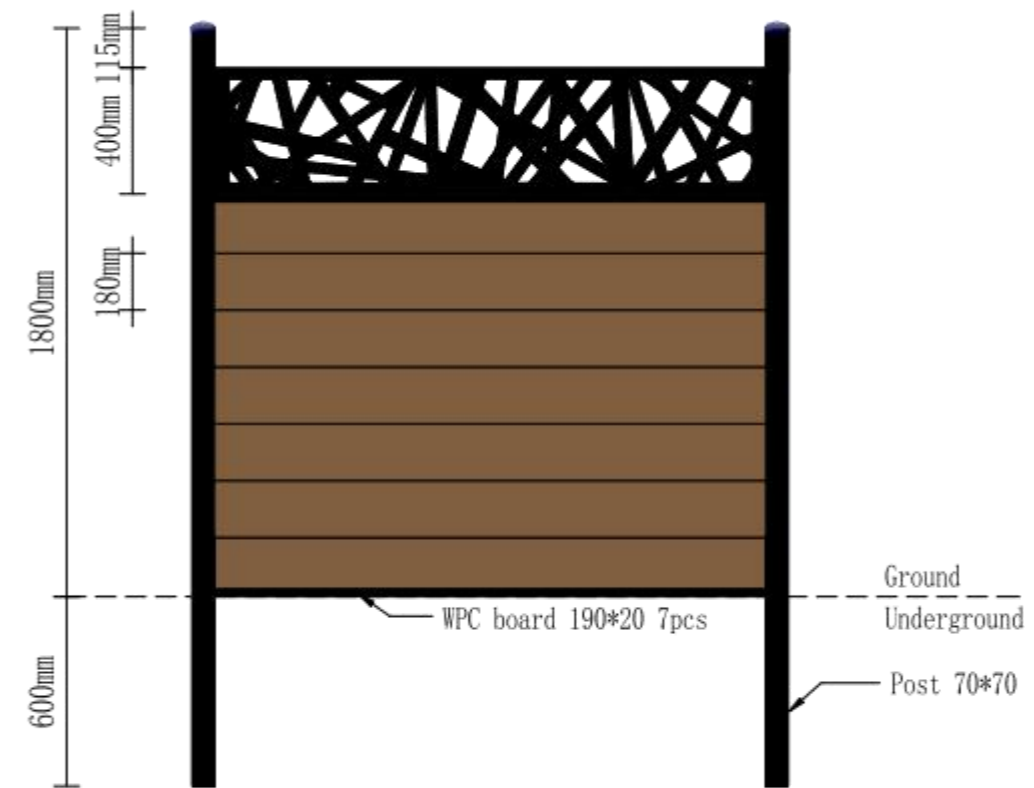
Saturno



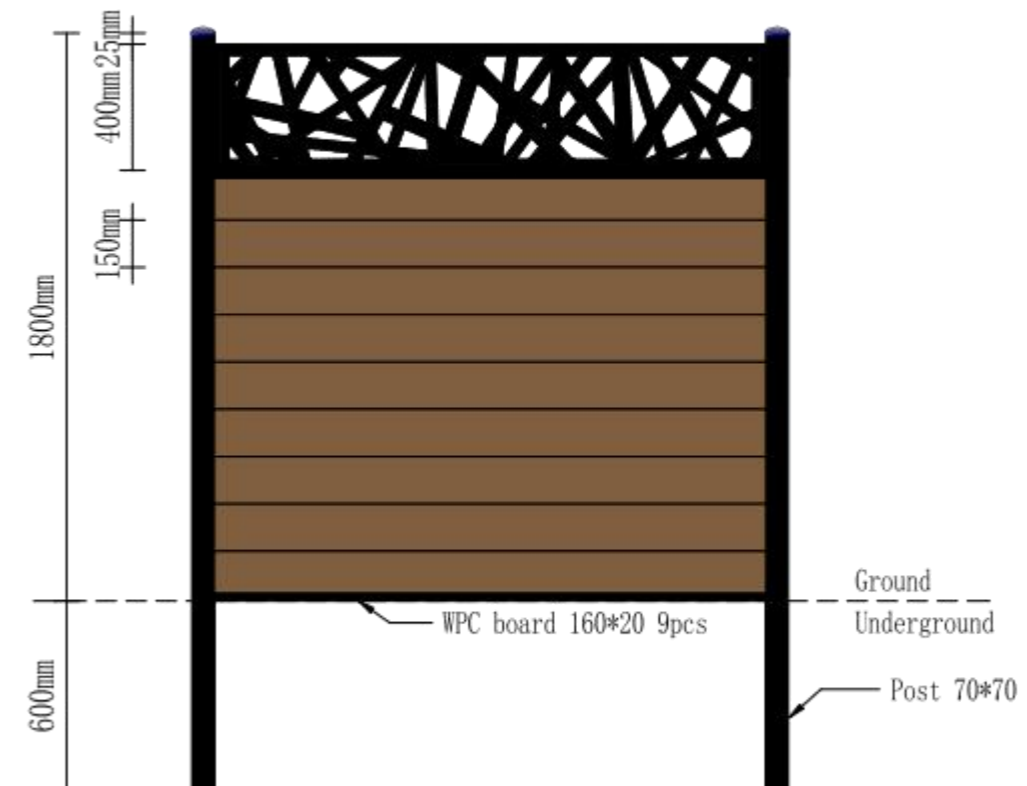
# NUOVA COMBINAZIONE: Taglio Laser + WPC



Plutone



Eris





# Elenco dei motivi laser



A1



A2



A3



A4



A5



A6



A7



A8

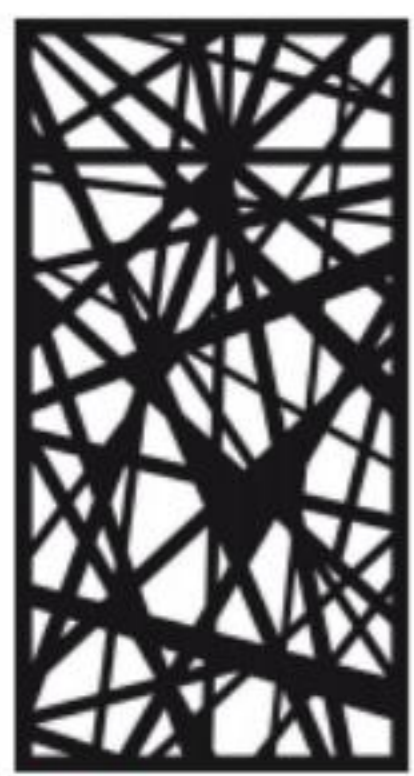


A9



A10

# Lista dei modelli laser



B1



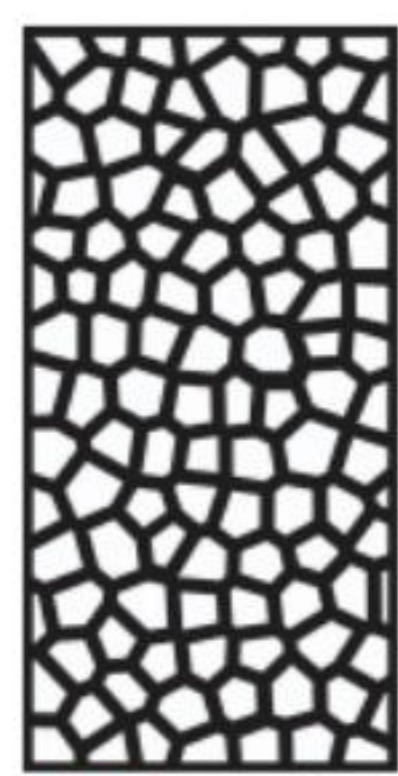
B2



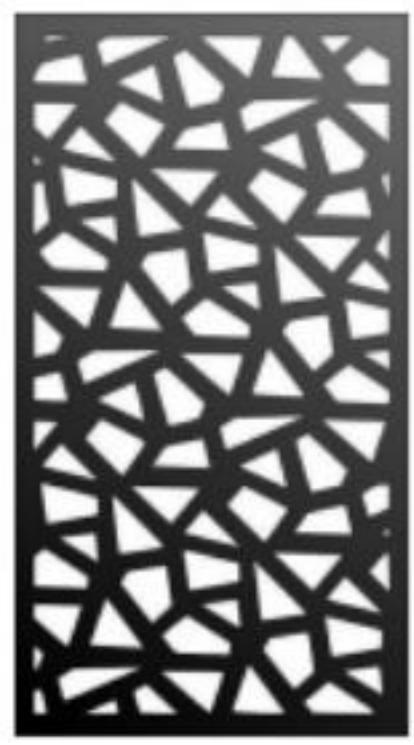
B3



B4



B5



B6



B7



B8

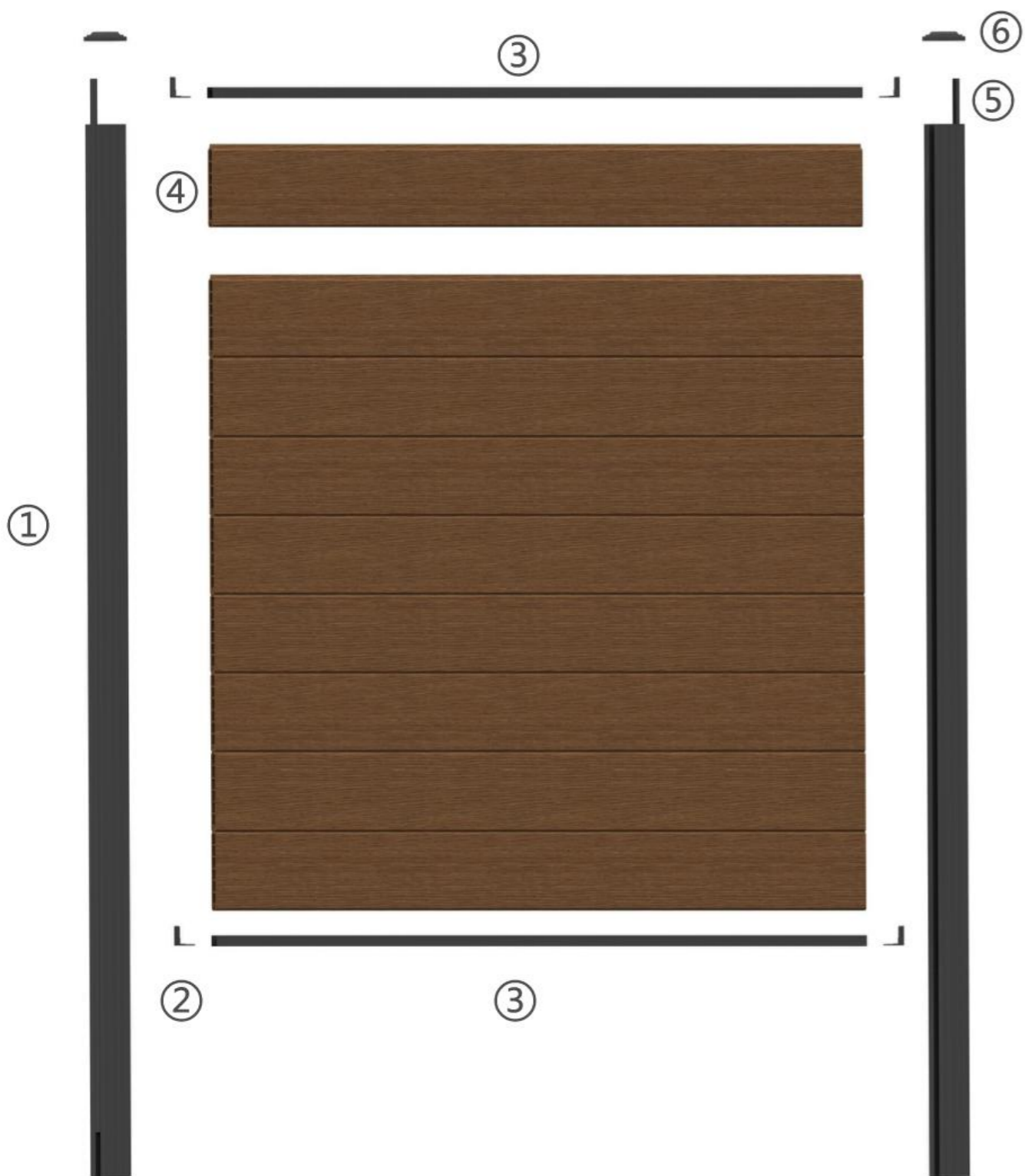


B9

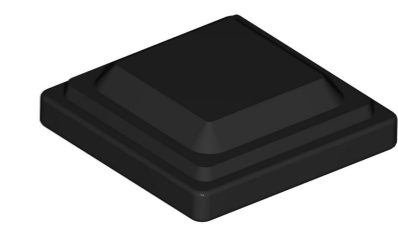
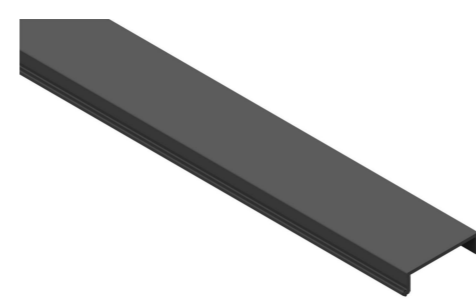
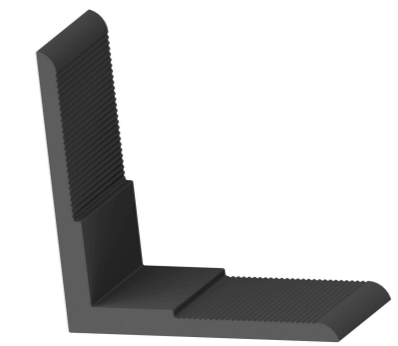


B10

## Guida all'installazione

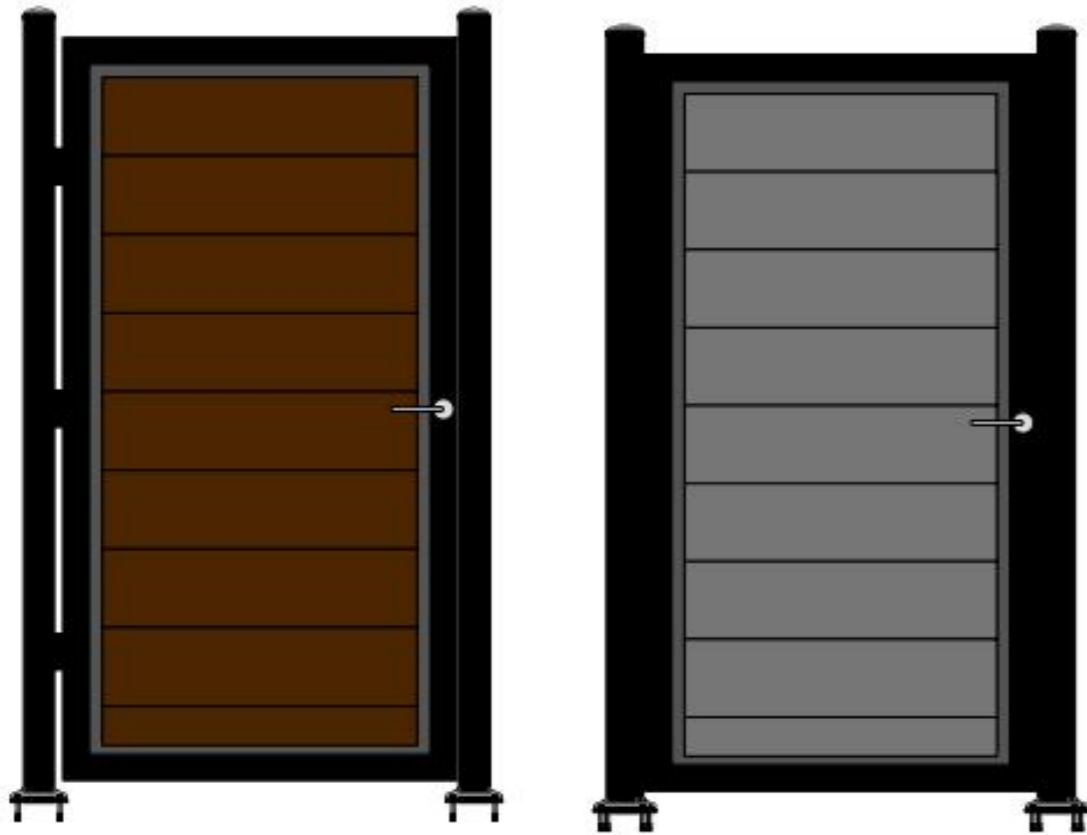


## Accessori per staccionate

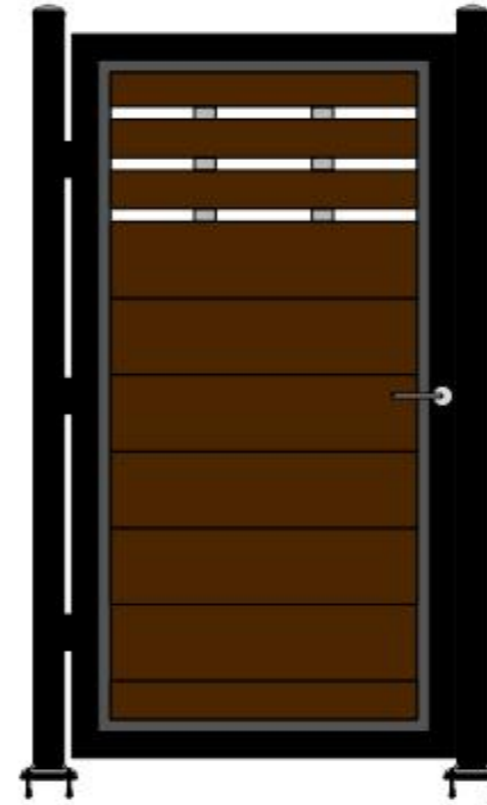


# Entrate in WPC

Entrata pedonale in WPC (full privacy)



semi-privacy



Entrata scorrevole in WPC