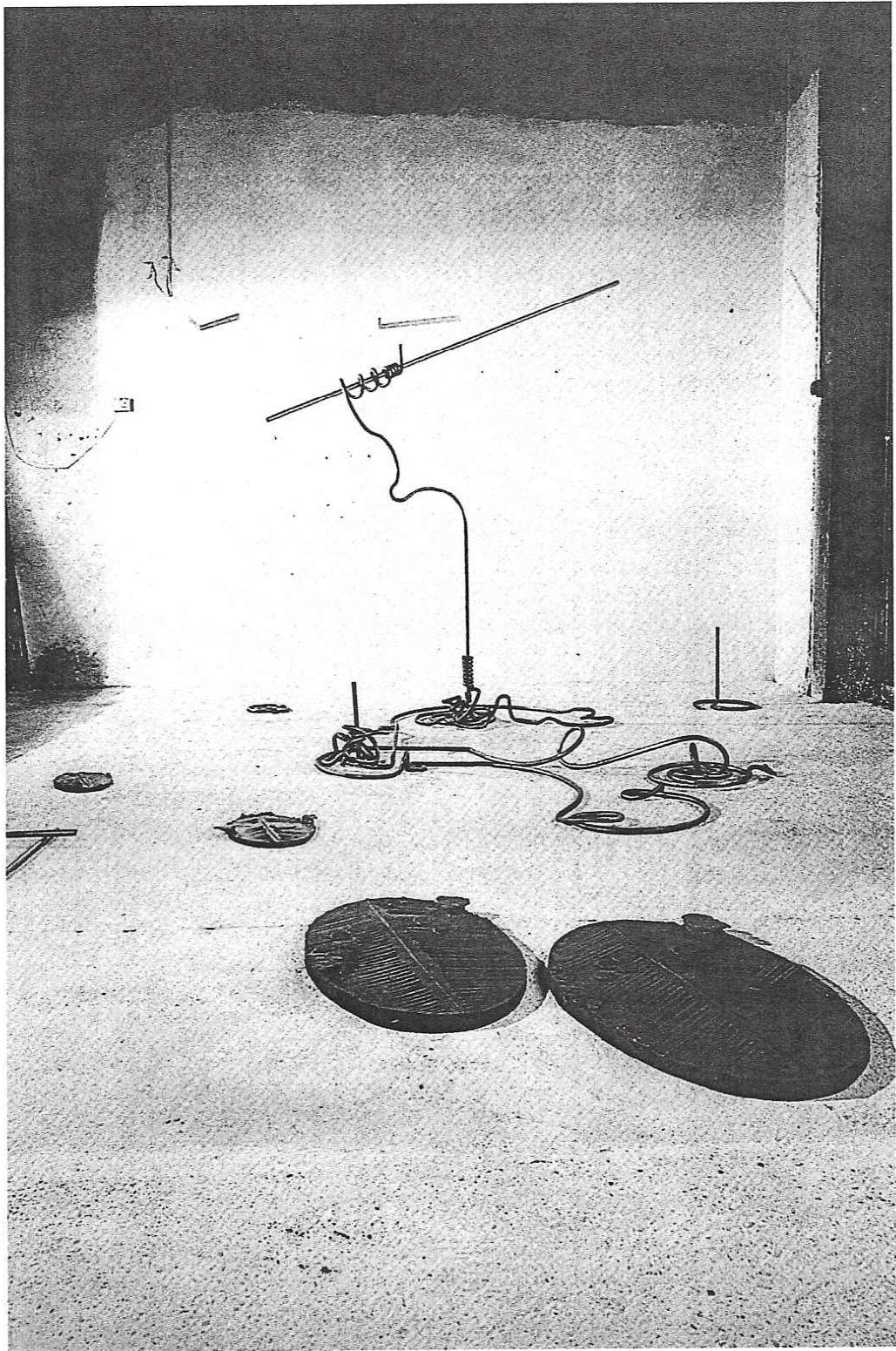


Cera del Grande gesto, 1972 fonderia di Verona



Tav. 71 – **Segno rosso per sottolineare le idee campate in aria**, 1973 ferro, bronzo e alluminio, cm. 250

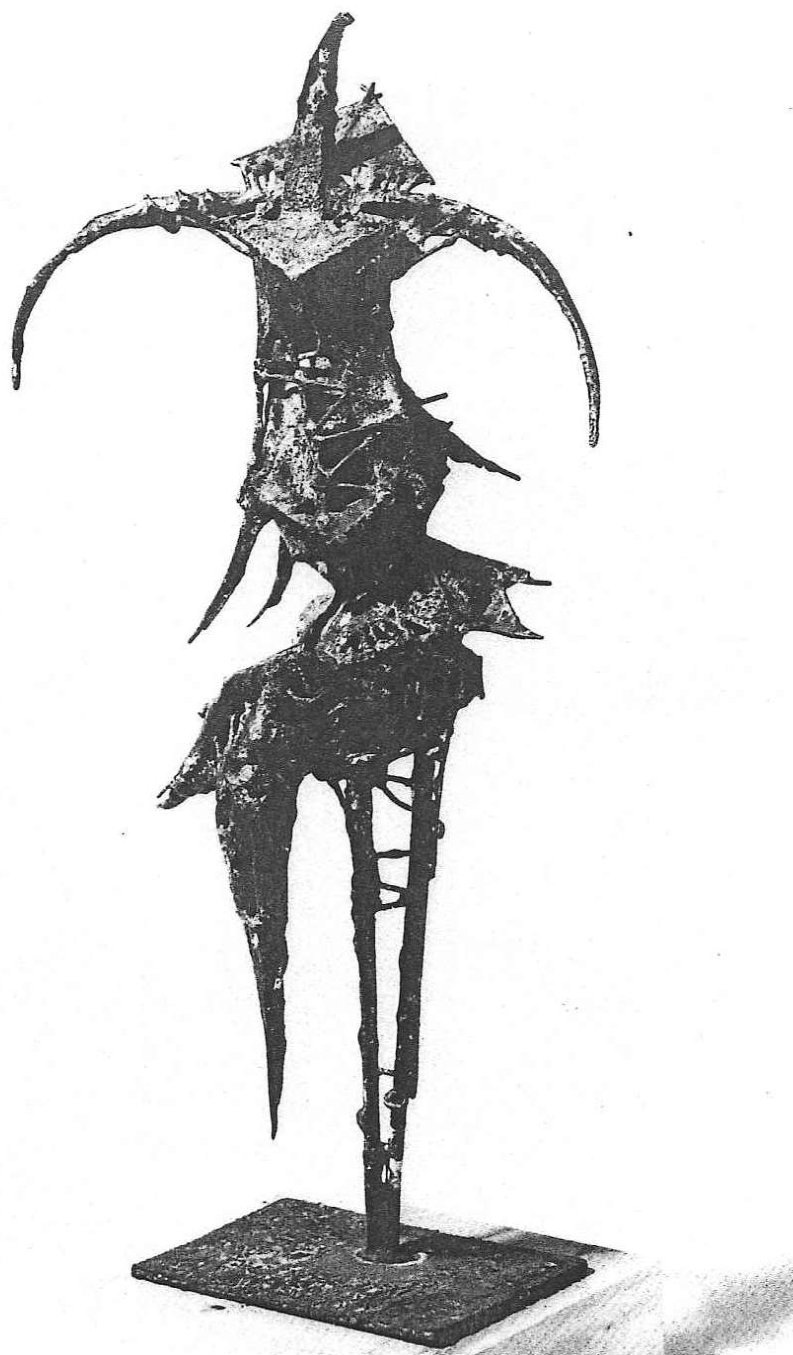
Opere



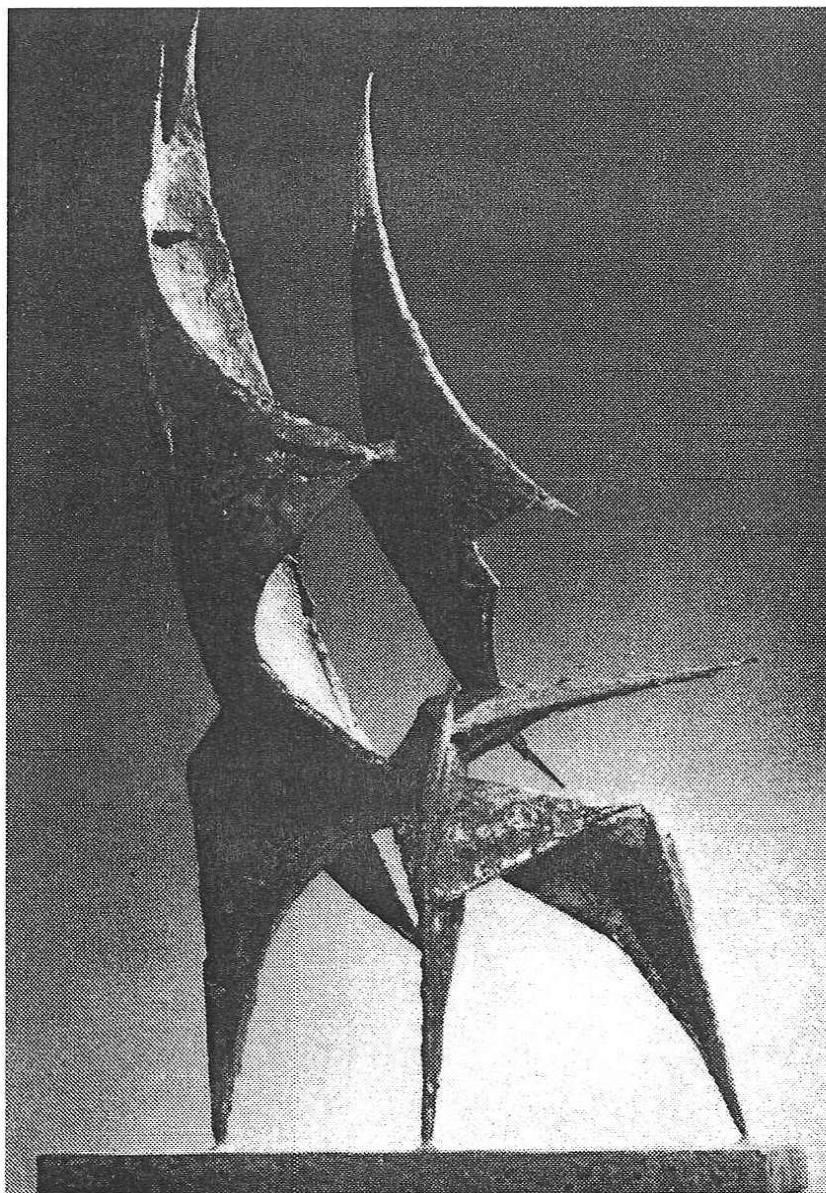
Ritratto di Giorgio Morandi, 1949 bronzo, h. cm. 15



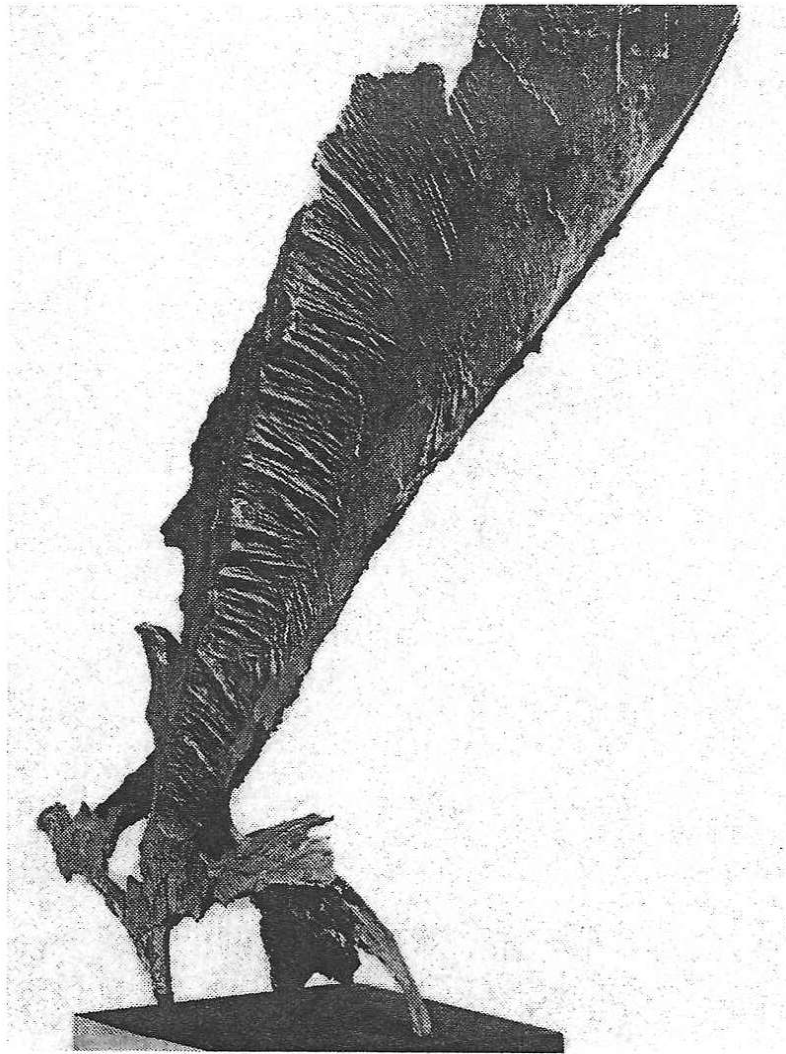
Ritratto di Giorgio Morandi, 1949 bronzo, h. cm. 15



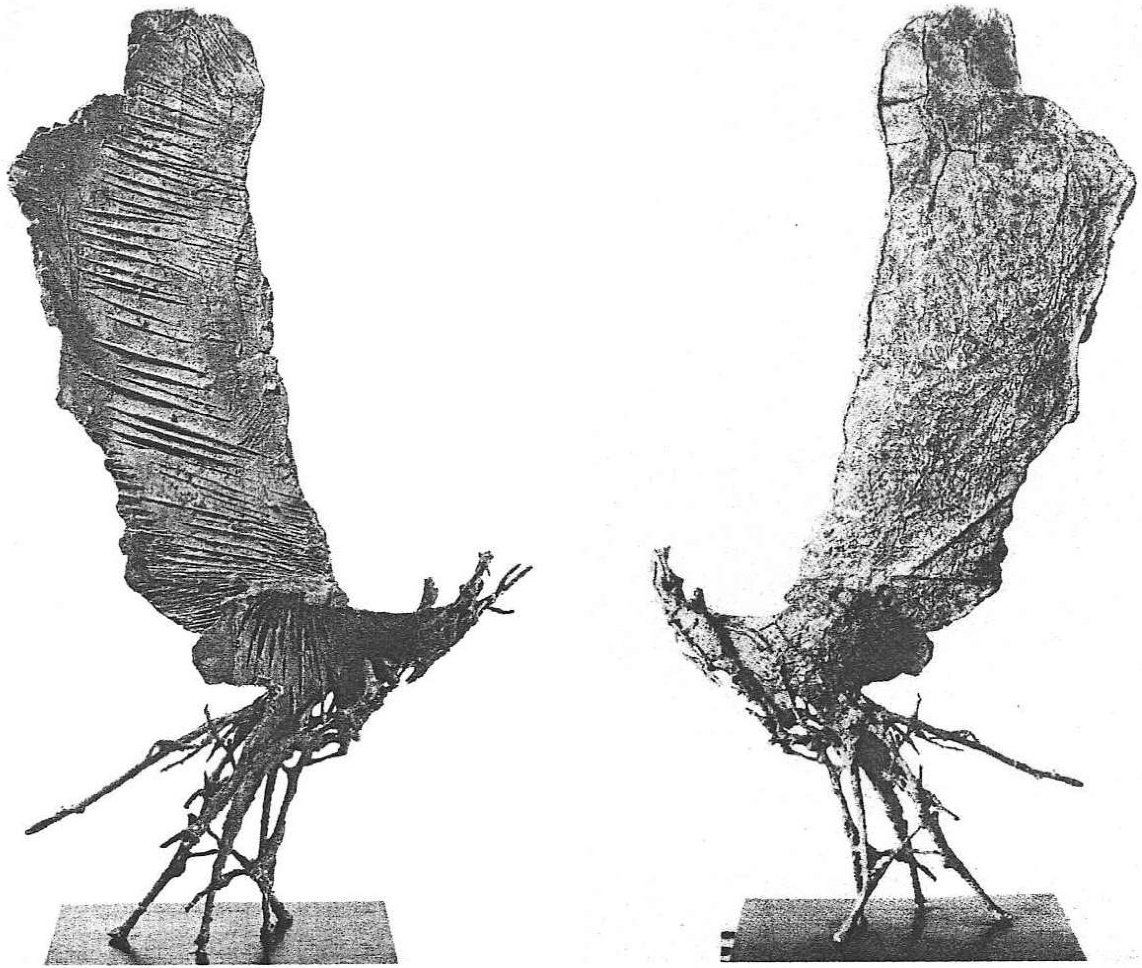
Spaventapasseri, 1955-56 ferro coperto in ottone, h. cm. 50



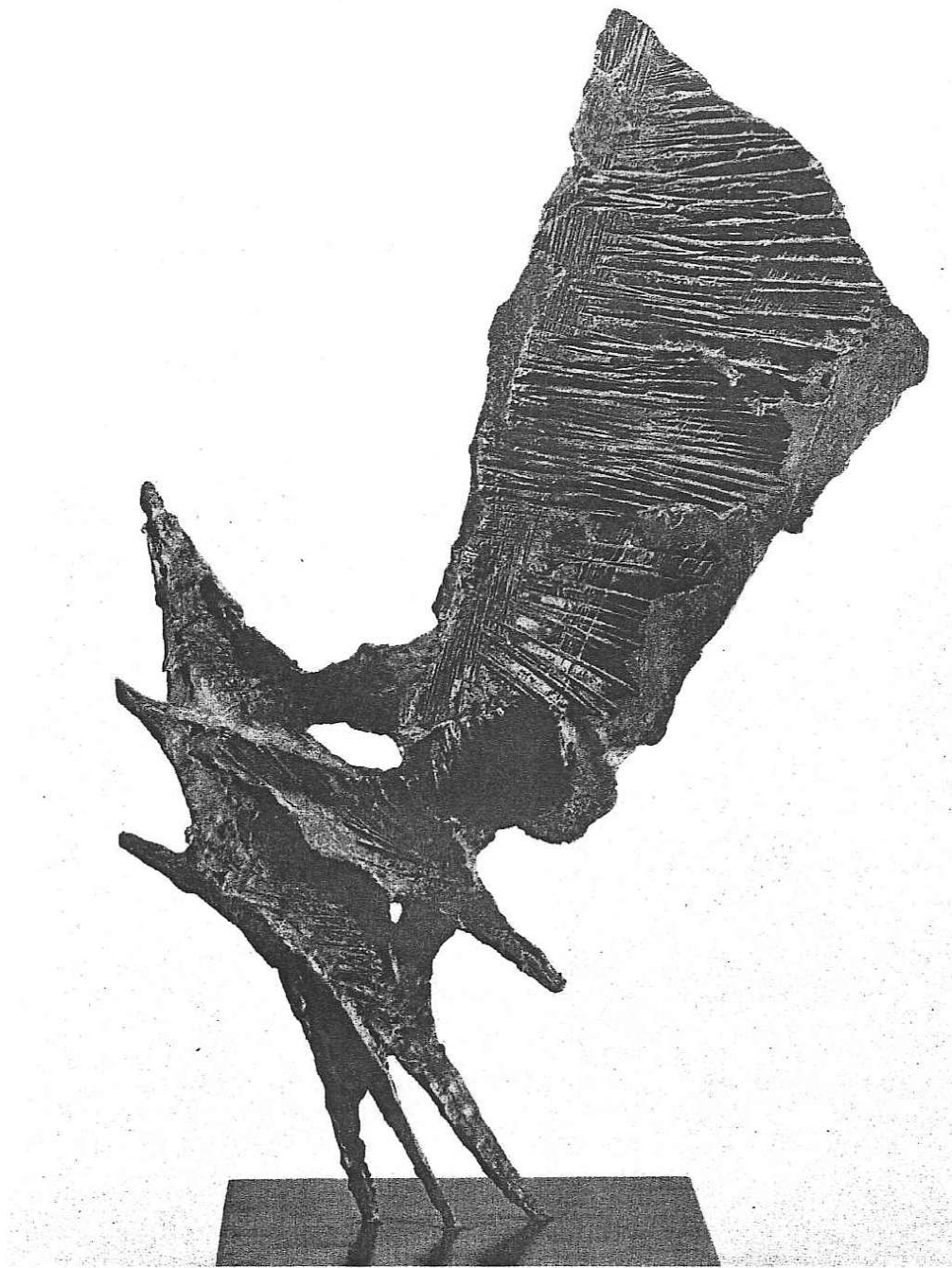
Sulla spiaggia, 1957 bronzo, coll. privata Bologna



Ala, 1959 bronzo, cm. 140x60, Museo Revoltella, Trieste. Esposta alla XXX Biennale di Venezia, 1960



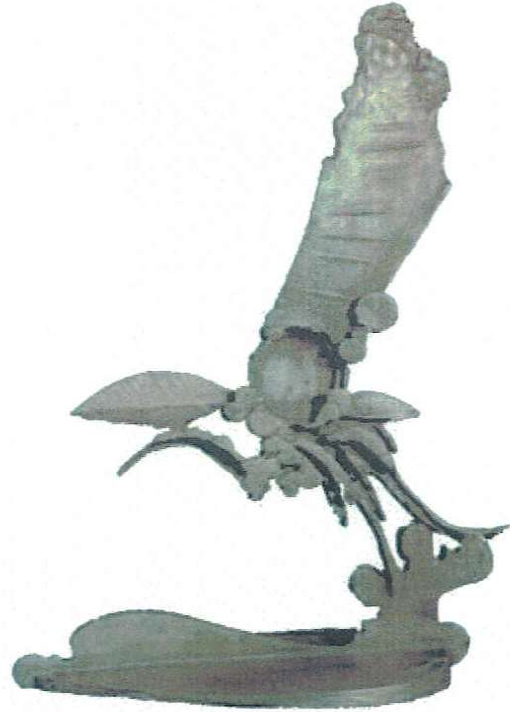
La grande foglia n. 2, 1959 bronzo, h. cm. 115, coll. privata Bologna



La grande foglia n. 3, 1959 bronzo, h. cm 110, Galleria d'Arte Moderna, Roma



Foglia di passo, bronzo cm. 62x34



Foglia insetto, bronzo cm. 42x32



Foglia di Padulle, 1959 bronzo



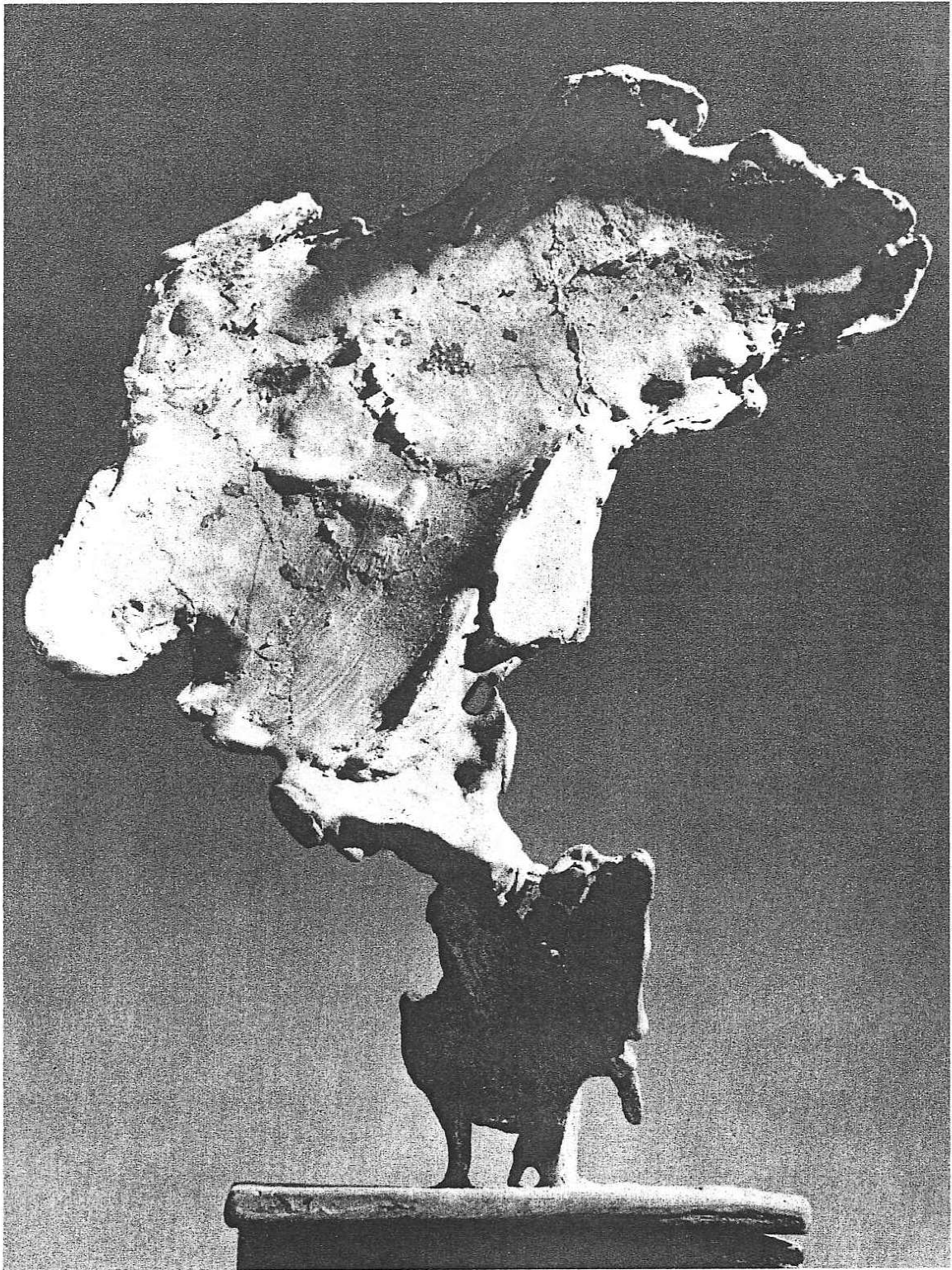
Foglia della notte, 1959 bronzo



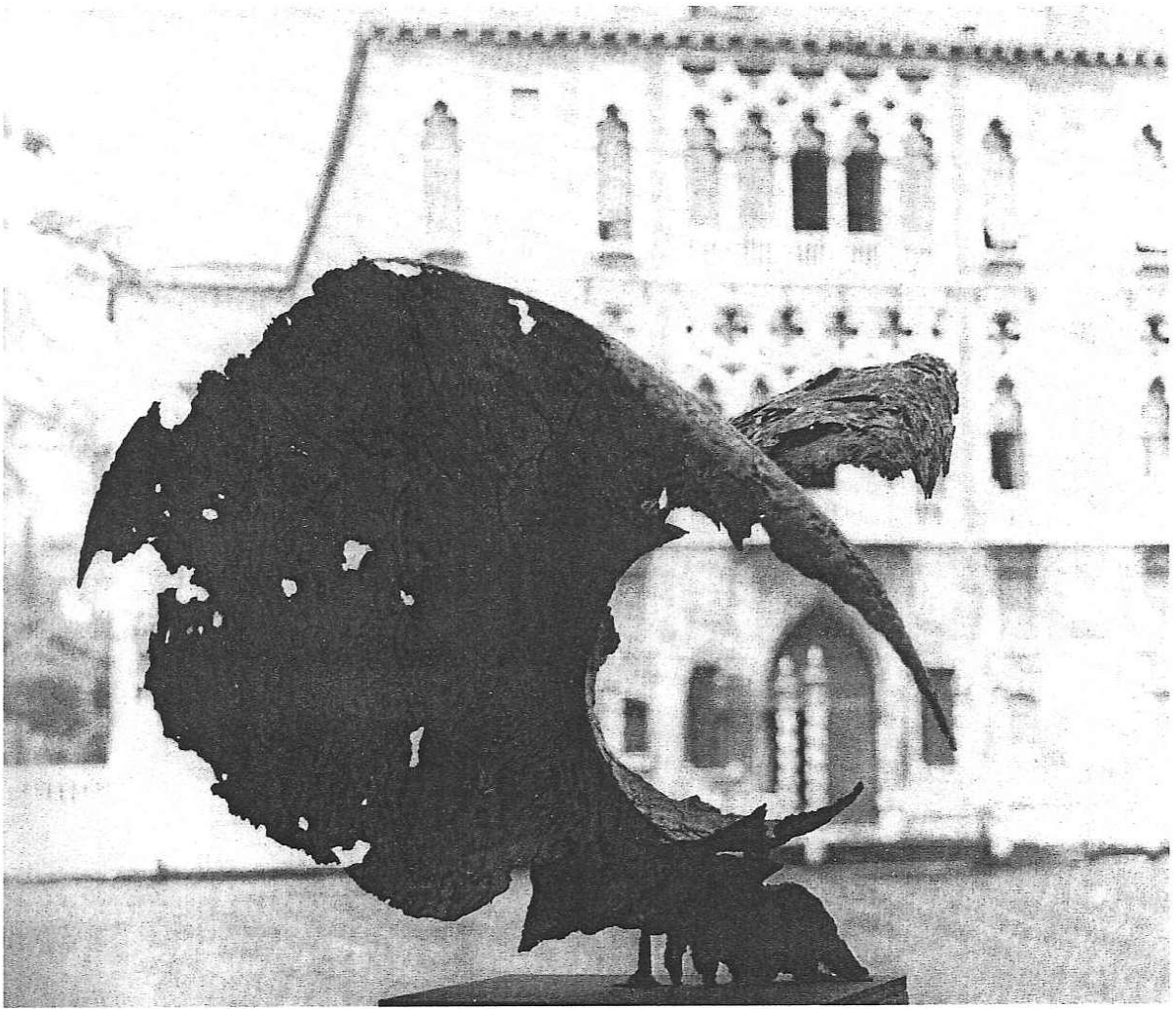
Foglia notturna, 1959 bronzo, Crevalcore, piazza centrale, chiesa di San Silvestro



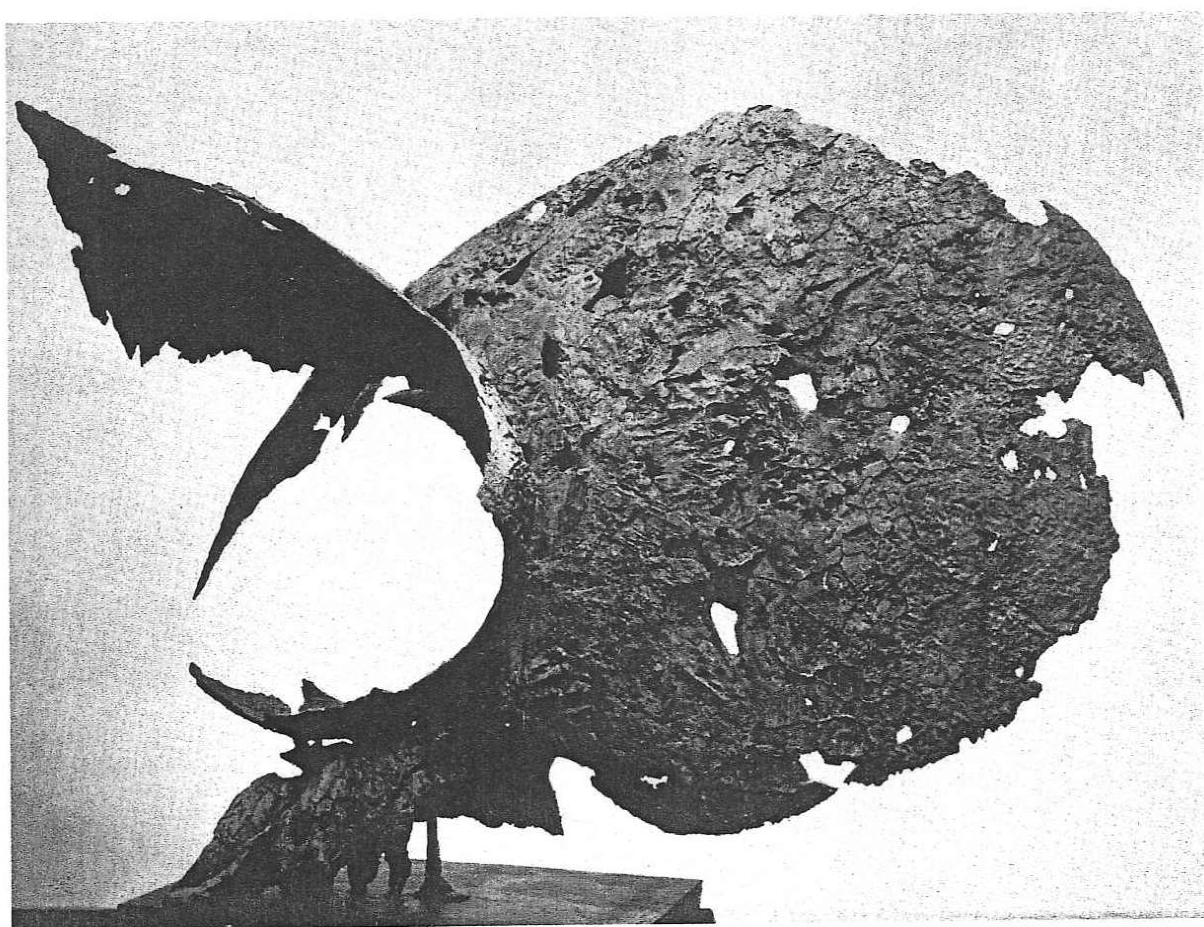
Studio per L'albero della paura, 1959 bronzo, particolare. Esposta alla XXX Biennale di Venezia, 1960



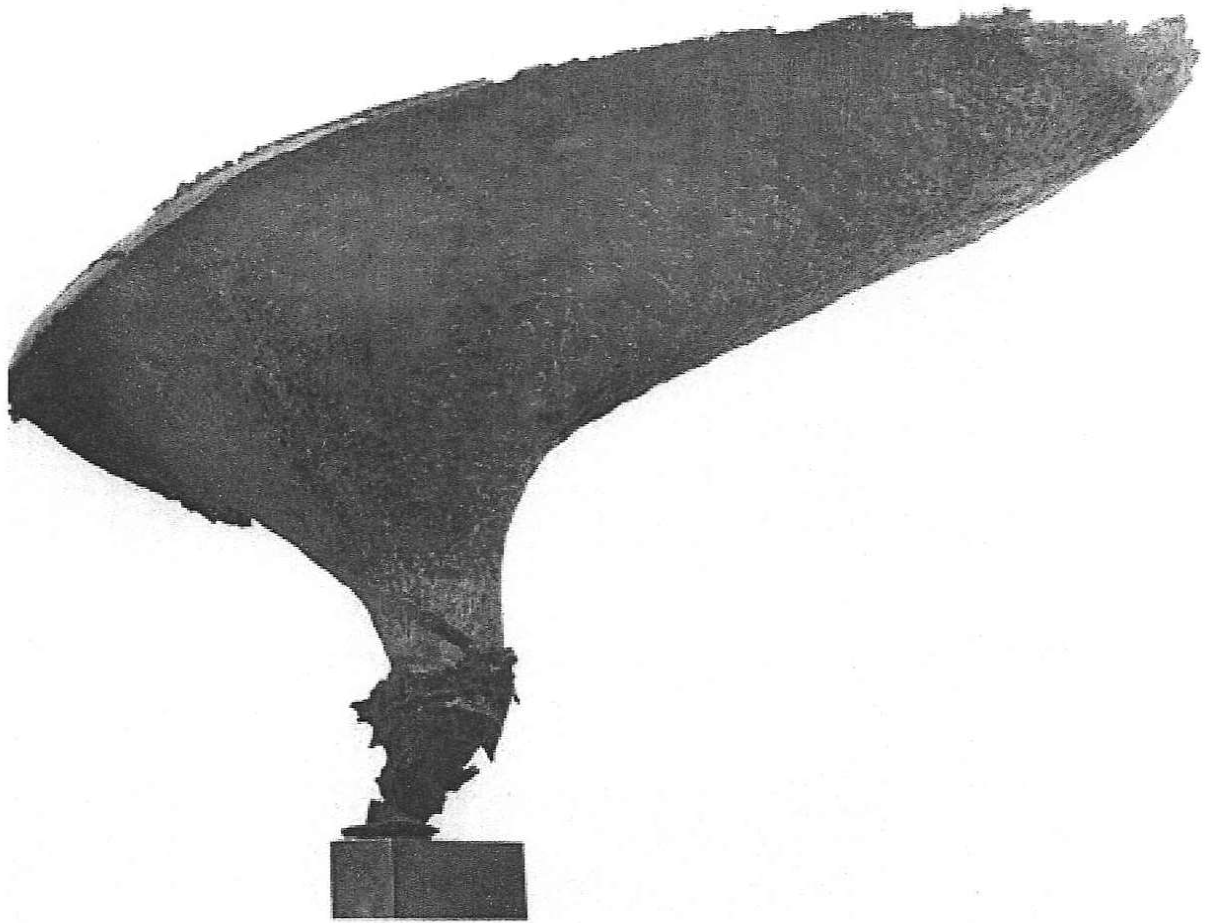
Studio per l'ultimo quarto, 1960 bronzo



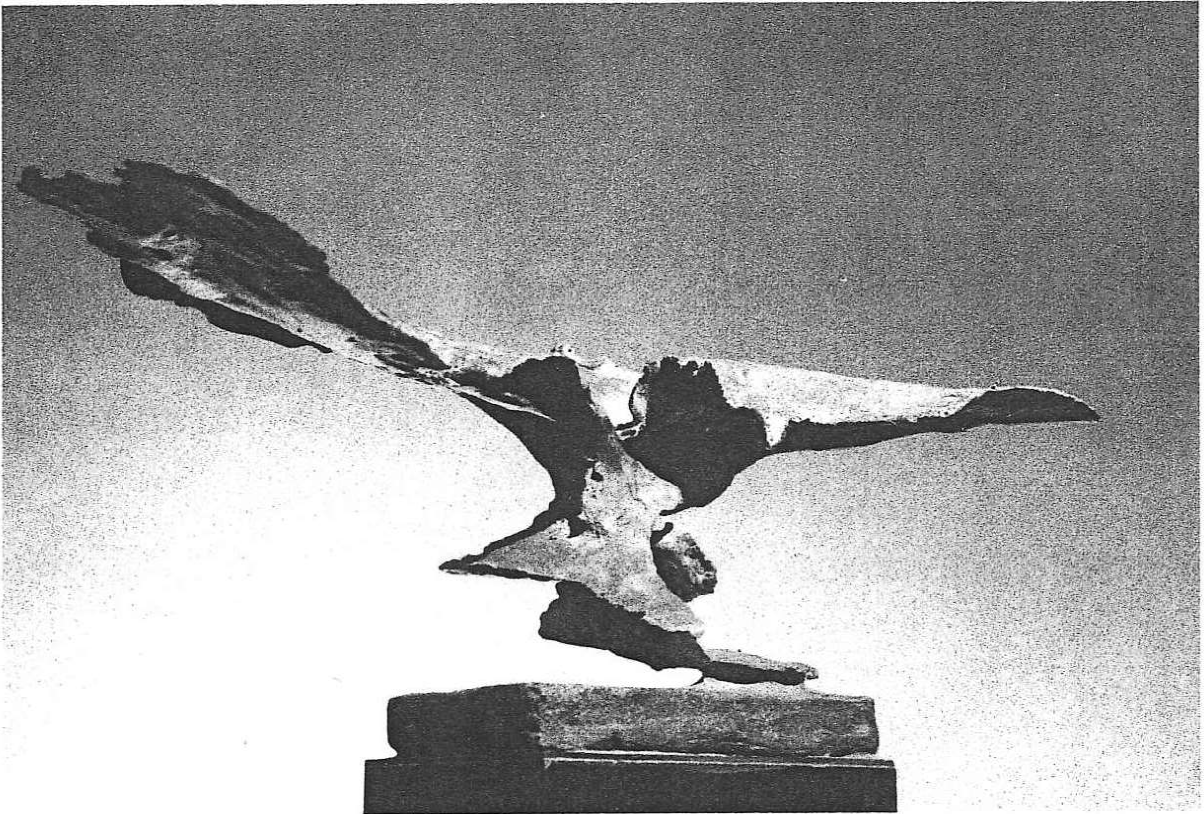
Momento del volo, 1960 bronzo



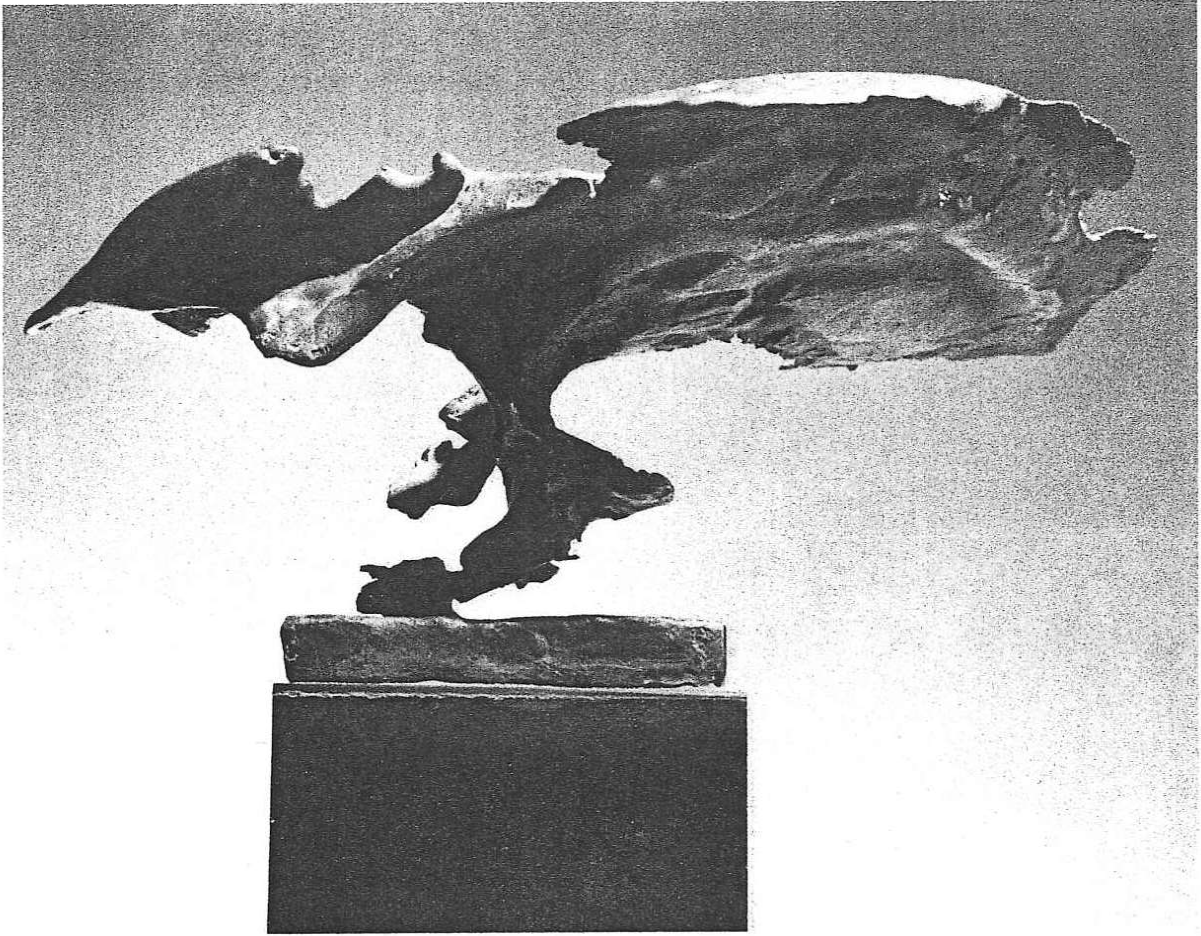
Momento del volo, 1960 bronzo



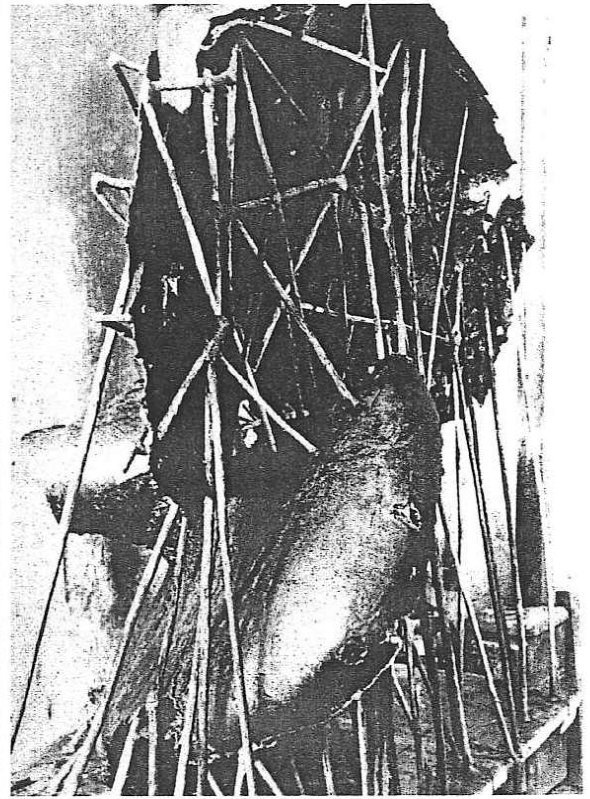
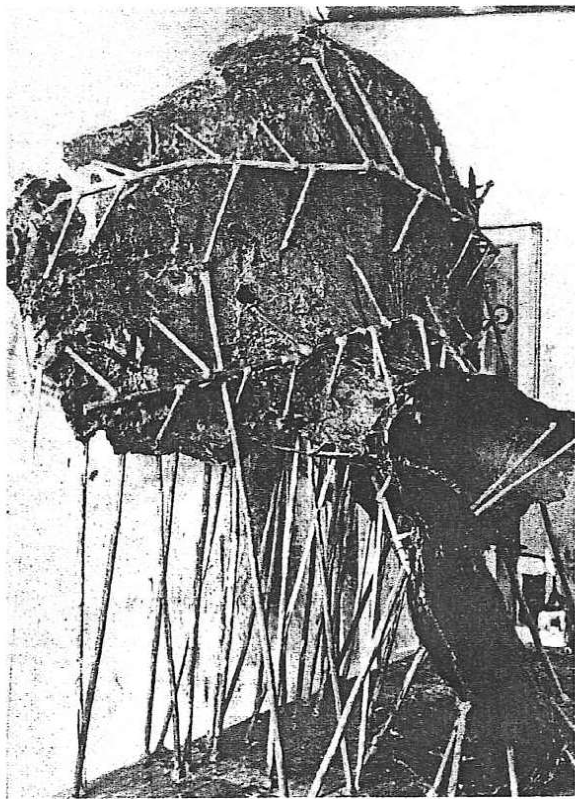
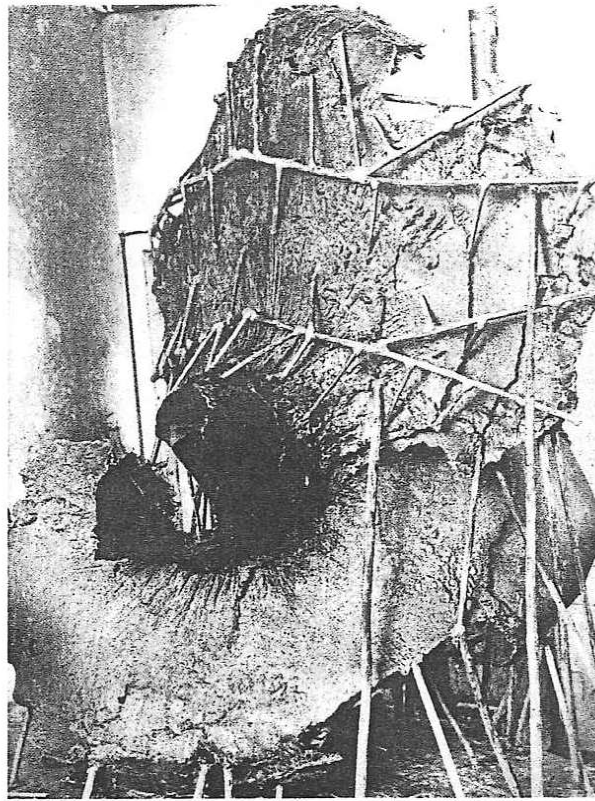
Il grande volo, bronzo



Grande volo, 1961 bronzo, cm. 60x130, coll. Gori, Prato



Grande volo, 1961 bronzo



Cera dell'Eclisse seconda, 1962