

NEXOIL

FLUID SYSTEMS MANUFACTURING



EDP

ELECTRONIC DIGITAL PANEL

USE, MAINTENANCE AND INSTALLATION MANUAL
Mod. 6012030 - 6012031 - 6012032 - 6012033

CE

Edition 01/2015
Z331001EN

INDEX

INTRODUCTION.....	3
TECHNICAL FEATURES	3
INSTALLATION	4
FASTENING AND DIMENSIONS	5
6012030 e 6012031	5
6012032 e 6012033	5
ELECTRIC CONNECTIONS.....	6
6012030 110/220V-50/60Hz e 6012031 12-24V AC/DC.....	6
6012032 400V-50/60Hz and 6012033 500V-50/60Hz.....	7
OPERATION	9
Operating and stop setting	9
ALARM MESSAGE	10
MAINTENANCE	10
TRANSPORT AND STORAGE	10
WIRING DIAGRAM 6012032 - 6012033.....	11
WARRANTY	12
Canceling warranty	12
DECLARATION OF CONFORMITY	13

INTRODUCTION

This use and maintenance manual refers to the E.D.P. electronic digital panel. The E.D.P. panel, for his flexibility, permit to control and monitoring the most part of the small and medium dimensions lubrication plant. Conserve properly this manual to avoid his damage.

TECHNICAL FEATURES

The EDP panel, thanks to its flexibility, allows the control and monitoring of a large part of the lubrication systems of small and medium dimensions. The follow tables indicate EDP's technical features in his versions.

Code	Power supply
6012030	110/220V-50/60Hz monophasé
6012031	12-24V AC/DC-(50/60Hz)
6012032	400V-50/60Hz threephase
6012033	500V-50/60Hz threephase

ABSORBED POWER	1,2W (electrical part, load excluding)
OPERATING TEMPERATURE	-5°C + 55°C
MAX OPERATING TIME	from 1 sec. to 99 min
MAX PAUSE TIME	from 1 min. to 99 hours
IMPULSE OPERATING COUNTER	1 ÷ 99 impulses
IMPULSE PAUSE COUNTER	1 ÷ 9999 impulses

INPUT SIGNALS	
Lubrication Control	<ul style="list-style-type: none"> - Pressure switch N.A. (in line) - Micro contact or magnetic reed contact (PMF) - proximity NPN / PNP (PMF)
Lubricant Level Control	<ul style="list-style-type: none"> - contact that closet when reaching the minimum level - 24V max
Impulse counter	Count frequency max 10 Hz al 25%
OUTPUT SIGNALS	
Compatible Pump	<ul style="list-style-type: none"> - electric - pneumatic
Distance Alarm Contact	<ul style="list-style-type: none"> - free from voltage - max. switchable voltage 250V 1A
Protection Level	IP 55

INSTALLATION

The EDP installation and use was given in charge by a qualified personnel with hydraulic and electric knowledge.

Control the dispositive and accessories integrity, check that, during the transport, it don't undergo damage.

In damage case of the unit, don't activate it.

In complaint case, contact immediately the NEXOIL srl sales office.

Possibility damages of the alimentation cable and slot can provoke an high voltage parts contact and consequently death risk.

The unit can be repair only by specialized personnel.

To avoid electric shock risk to the tension parts direct or indirect contact, is necessary that the electric alimentation line is adequate protected by an apposite protected by an apposite magnetotermical differential switch with 0,03 A intervention threshold and max. 1 second intervention time.

Is prohibited use the control panel in an aggressive explosive or inflammable ambient.

To the wall montage there is 4 fixing holes like the indications of "FASTENING AND DIMENSIONS" paragraph.

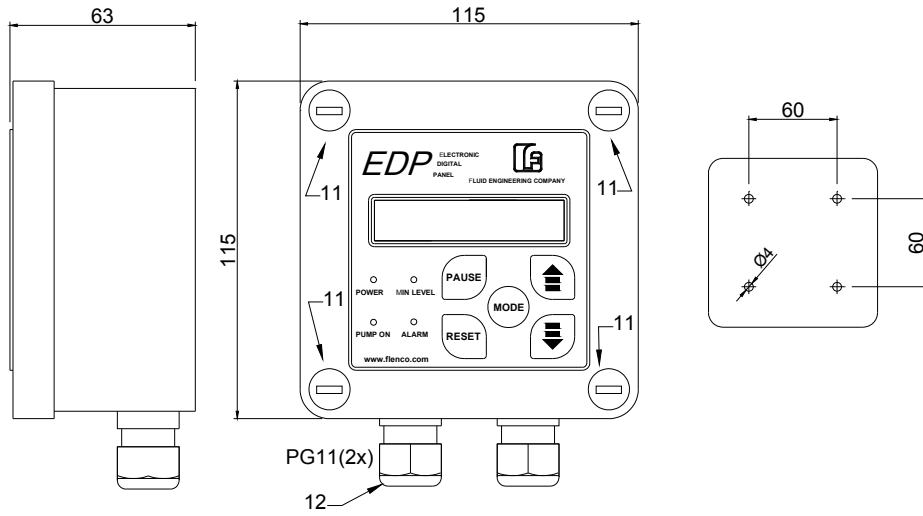
Is necessary for see adequate spaces to avoid the possibility of crash and anomalous position to the user.

For the electric connection see the "electric connection" paragraph.

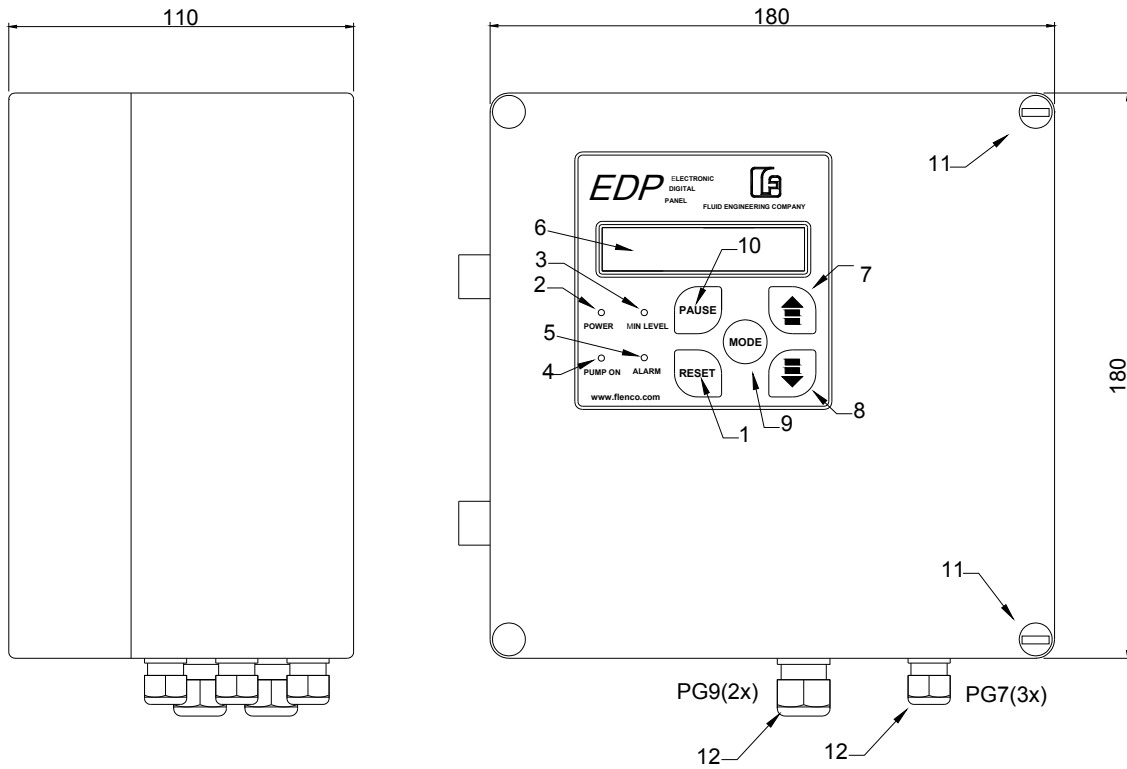
For every equipment start it doing an auto-check of his functions and put in evidence on display all possible alarms.

For the electric board protection, there is an electric fuse if this one enter in work, is necessary switch off the edp's equipment for 60 second and subsequently restart it.

**FASTENING AND DIMENSIONS
6012030 e 6012031**



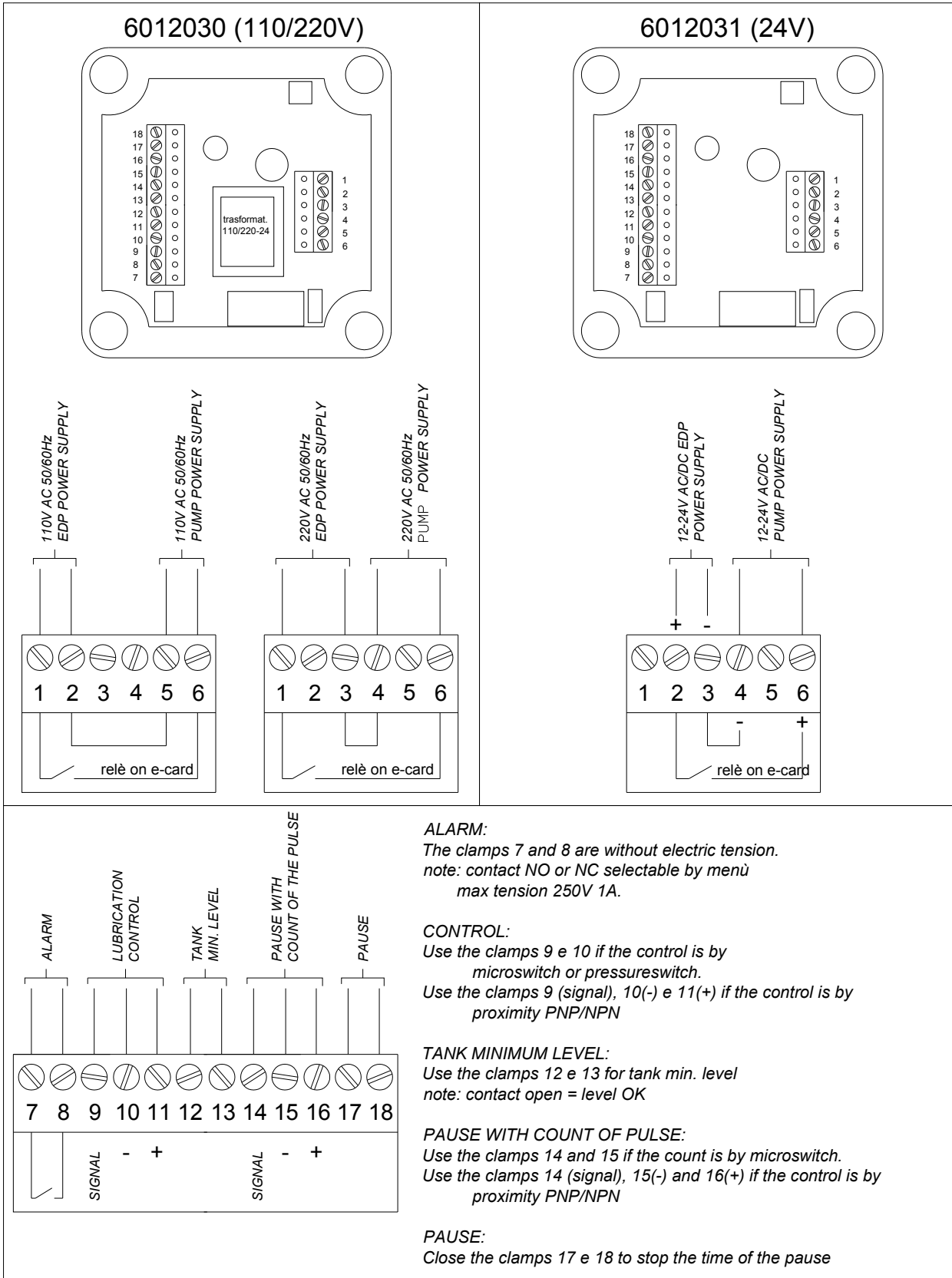
6012032 e 6012033



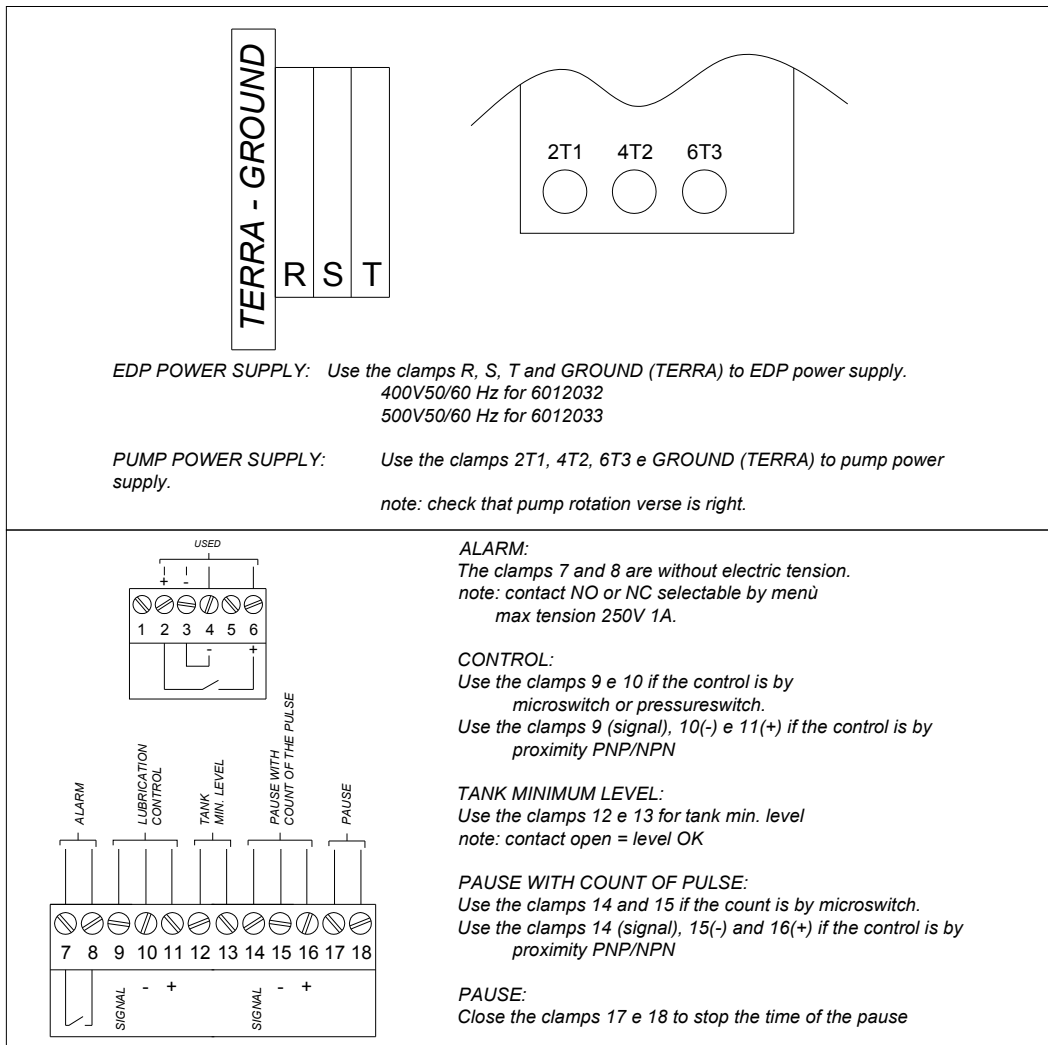
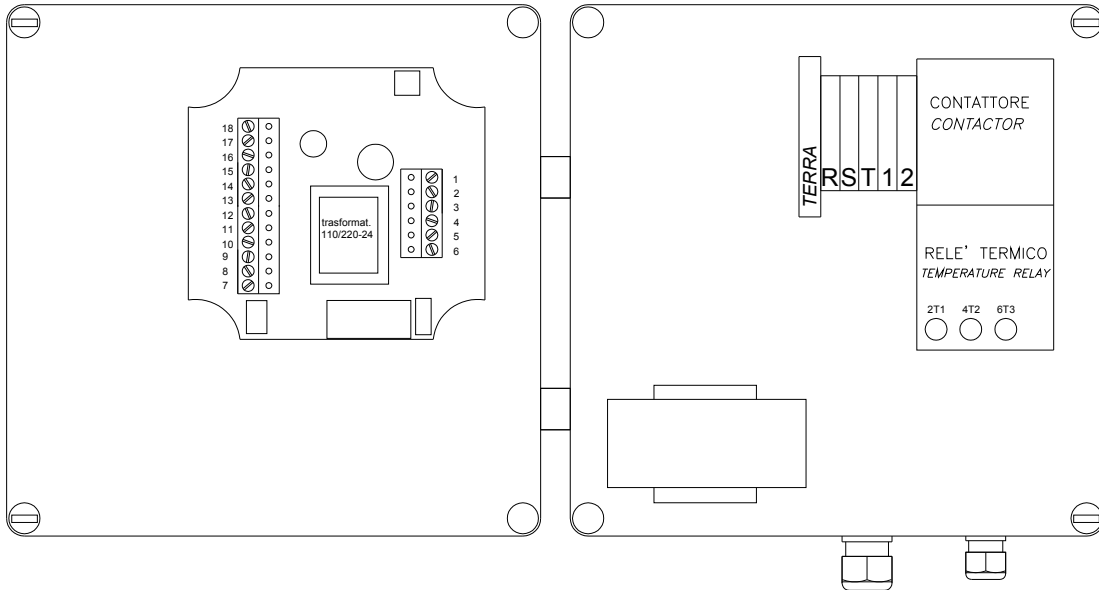
- 1 RESET KEY
- 2 EDP POWER SUPPLY LED
- 3 TANK MINIMUM LEVEL LED
- 4 WORK CYCLE LED
- 5 ALARM LED
- 6 DISPLAY
- 7 "UP" KEY
- 8 "DOWN" KEY
- 9 MODE KEY
- 10 PAUSE KEY
- 11 SCREWS TO OPEN THE COVER
- 12 WALL CROSSING FITTING FOR CABLES

ELECTRIC CONNECTIONS

6012030 110/220V-50/60Hz e 6012031 12-24V AC/DC



6012032 400V-50/60Hz and 6012033 500V-50/60Hz



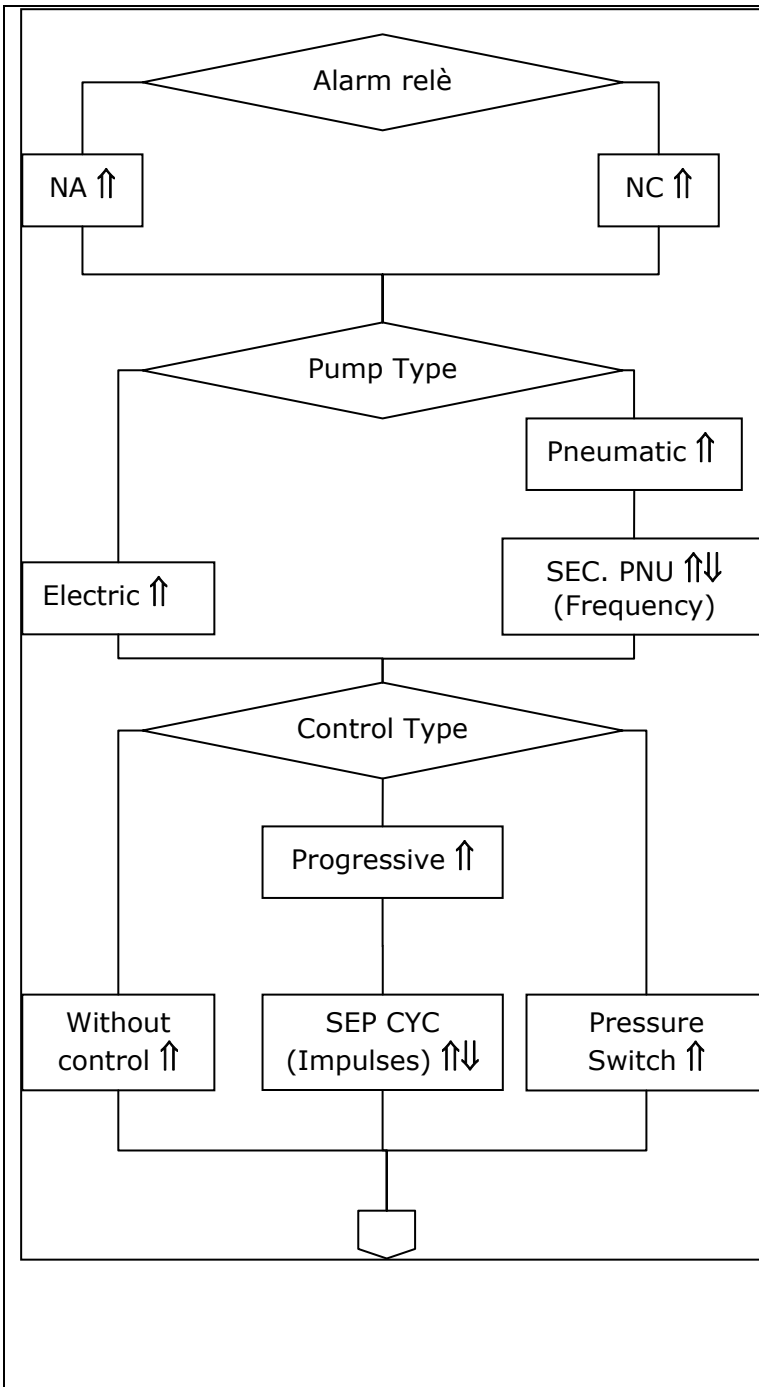
PROGRAMMING

The programming came with the installation menu where we can enter with the simultaneous pushing for 2 seconds ↑ and ↓ button.

With the sequently diagram we can adapt the EDP to your plant.

Into the menu use:

- ↑ button to flow the options.
- ↑↓ button to modify the data item (stay pushing to slide)
- MODE button to the selection confirm and advance into the menu.



Relé Alarm.

Define the contact type ,NA or NC that the EDP' s panel must be supply at the alarm connection 7 and 8.

Pump Type.

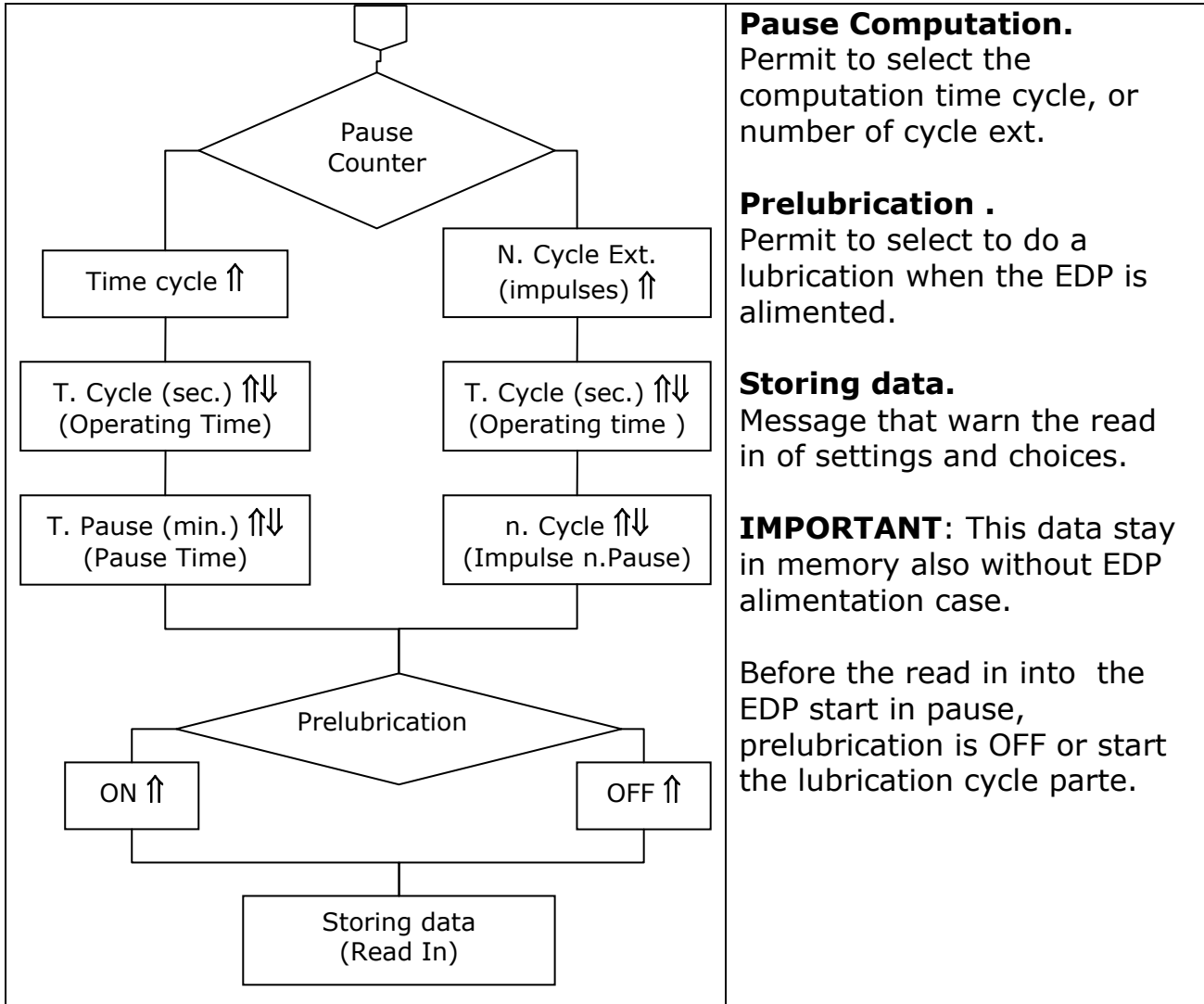
Let's to select electric or pneumatic pumps. In the last case it's possible to define frequency, in seconds, in ON and OFF for the pumps alimentation.

Type of Control.

Let's to select the lubrication control:

- WITHOUT CONTROL
never control
- PRESSURE SWITCH control
by a pressure switch installed on the lubrication line. The EDP must be receive the signal in a operating time setting (before in the menu). Before start of the signal the operating stops.

PROGRESSIVE control with a sensor installed on the progressive distributor PMF .In that case is possible to lay EDP's impulse number that must be receive in a operating time setting. At the reachement to the impulse setting ,the cycle ending.



Pause Computation.
Permit to select the computation time cycle, or number of cycle ext.

Prelubrication .
Permit to select to do a lubrication when the EDP is alimented.

Storing data.
Message that warn the read in of settings and choices.

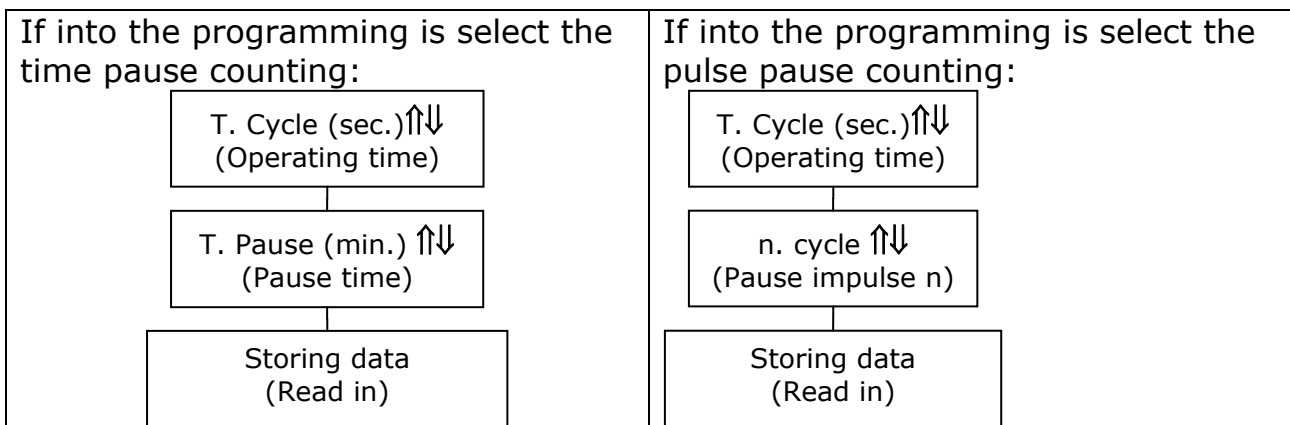
IMPORTANT: This data stay in memory also without EDP alimentation case.

Before the read in into the EDP start in pause, prelubrication is OFF or start the lubrication cycle parte.

OPERATION

Operating and stop setting

The operator menu permit a fast modification about operating and pause data. To use this menu push MODE button for 2 sec.



Before the programming and the laying about the time and pause values, verify the pump starting (he rotation direction etc.), the adequate lubrication of the machine and the possible control system.

To stop the lubrication system push "PAUSE" button for 2 seconds at least

If the system is operative, the EDP will take to end the lubrication ,will go in pause and will appear "SERVICE" on the display.

If the system is in pause time ,the EDP will stop to counting and will appear "service" notice.

To restart the system push "start" button until apparition to the "RELEASE KEYS" notice.

At the EDP restart ,in case of lack alimentation we have 2 case:

-PRELUBICATION ON : the EDP restart ever the lubrication cycle

-PRELUBICATION OFF :

1. if the EDP is in pause time restart in pause at the values memorized before to the lack lubrication.
2. if the EDP is in work time restart in pause time.

With "RESET" button, besides to reset alarm messages, the EDP restart wit it go out to the installation or operator menu.

ALARM MESSAGE

CYCLE ALARM!!!: Problem during lubrication signaled by the control system installed (pressure switch ,micro switch on progressive etch.)

LOW LEVEL ALARM: The lubricant level into the tank is minimum.

Top up the lubricant and push "RESET" to restart the system.

MAINTENANCE

The EDP don't required particular maintenance.

In necessity case ,clean with a soft cloth without the use of aggressive solvent that can damage the envelope.

TRANSPORT AND STORAGE

The stored and transport was doing in a box board.

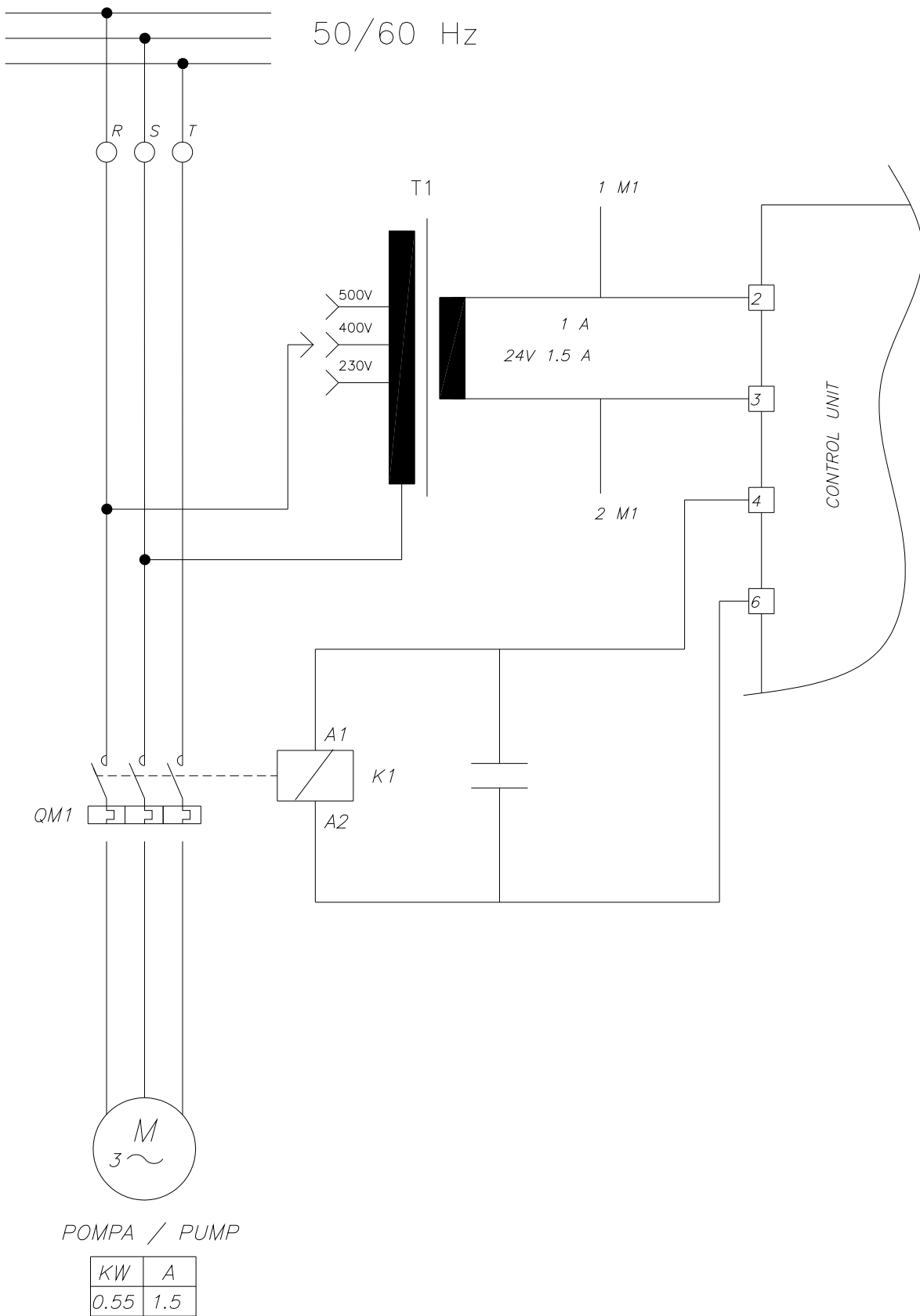
During the store ,components and machine can support from -20 to +50 °C temperature.

To avoid damages is necessary that the starting came when the equipment temperature is min. -5°C.

Don 't disperse pollution parts into the environment in equipment demolition case.

Make reference to the local regulation for a correctly elimination

WIRING DIAGRAM 6012032 - 6012033



WARRANTY

For any defects of construction and material Nexoil guarantees its products for a maximum of 12 months from the date of delivery.

The warranty covers up to a maximum of 18 months in the case in which the installation is performed over the 6 months following the date of delivery.

Parts subject to normal wear and tear are not covered by the warranty.

In case of failure, communicate to Nexoil: defect, product code, serial number (if any), delivery date, installation date, other that may be useful for management reporting.

The Nexoil will provide telephone support or on-site depending on the situation or communicate the return authorization number (RNC) for returning the part. In the latter case the Nexoil reserves the right to choose between repair and replacement.

If the warranty is still valid, the particular will, free of charge, repaired or replaced.

If the products are not found defective, the Nexoil will decide whether to charge the customer for the costs incurred.

Are to be considered excluded from the warranty damage, injury or expense arising from any defect of the product.

The conditions of validity of the product warranty Nexoil are implicitly accepted at the time of purchase of the product.

Canceling warranty

The warranty is considered to be annulled in the following cases:

- The product is damage by improper use, incorrect installation and use other than that intended.
- The product underwent tampering and/or modifications without written permission of Nexoil srl.

DECLARATION OF CONFORMITY



DICHIARAZIONE DEL FABBRICANTE

DECLARATION BY THE MANUFACTURER

*Ai sensi dell'allegato II. B – della Direttiva 2006/42/CE sulle Macchine
(Macchine destinate all'incorporazione in altre macchine o linee)
In accordance to the annex II. B – Directive 2006/42/CE – Machinery (Machinery for incorporation into other machines or lines)*

NEXOIL s.r.l.

Dichiara sotto la propria responsabilità che il prodotto denominato:
Declares under its own responsibility that the product named:

Descrizione:
Description: EDP – Pannello Elettronico Digitale

Codice articolo:
Item Number: 6012xxx

Matricola:
Serial Number: xxxxxxxx yy / zz

È conforme alle disposizioni legislative Nazionali che traspongono le seguenti Direttive CE:
is in conformity with Nation laws that transposing the following EC Directives:

- Direttiva Macchine 2006/42/CE.
- Direttiva Bassa Tensione 2006/95/CE.
- Direttiva Compatibilità Elettromagnetica 2004/108/CE

AVVERTENZA IMPORTANTE!

È vietato mettere in servizio il prodotto oggetto della presente dichiarazione, prima del completamento e/o incorporamento, in totale conformità alle disposizione della Direttiva Macchine 2006/42/CE.

IMPORTANT WARNING!

It is forbidden to operate the product object of this declaration before to the completion and/or building in in full compliance with the Machinery Directive 2006/42/EC.

Avigliana, il XX/YY/ZZZZ

NEXOIL s.r.l.
Sede Legale e Amministrativa
Via per Esigiano n. 27
31052 BUSTO ARSIZIO (VA)
C.F. e Part. IVA: 03175670128

Nexoil s.r.l.

Sede legale ed amministrativa
Via per Fagnano, 27 21052 Busto Arsizio (VA)
Tel. +39 0331 636390 - Fax +39 0331 622684

Ufficio commerciale e tecnico
Corso Torino, 2 - 10051 Avigliana (TO)
Tel. +39 011 9342434 - Fax +39 011 9370532

Ufficio commerciale
Via S. Maria Rossa, 8 - 20132 Milano
Tel. +39 02 26306266 - Fax +39 02 26306274

Registro delle imprese di Varese, C.F. e P.I. 03175670128 - N° REA: VA 329250 - Cap. Soc.100.000,00 €

NOTES



Nexoil s.r.l.

Sede legale ed amministrativa

Headquarters

Via per Fagnano, 27 - 21052 Busto Arsizio (VA)

Tel. +39 0331 636390 Fax +39 0331 622684

Unità produttiva, commerciale e tecnica

Production, Sales and Technical Dept.s

Corso Moncenisio, 18 - 10090 Rosta (TO)

Tel. +39 011 9342434 Fax +39 011 9370532

www.nexoil.it

This manual is the property of NEXOIL srl.

The NEXOIL reserves the right to make changes, at any time and without prior notice, for technical and commercial reasons.

Reproduction of any part of this manual is forbidden by law without the written permission of the NEXOIL srl.

Copyright © 2015 by NEXOIL srl.