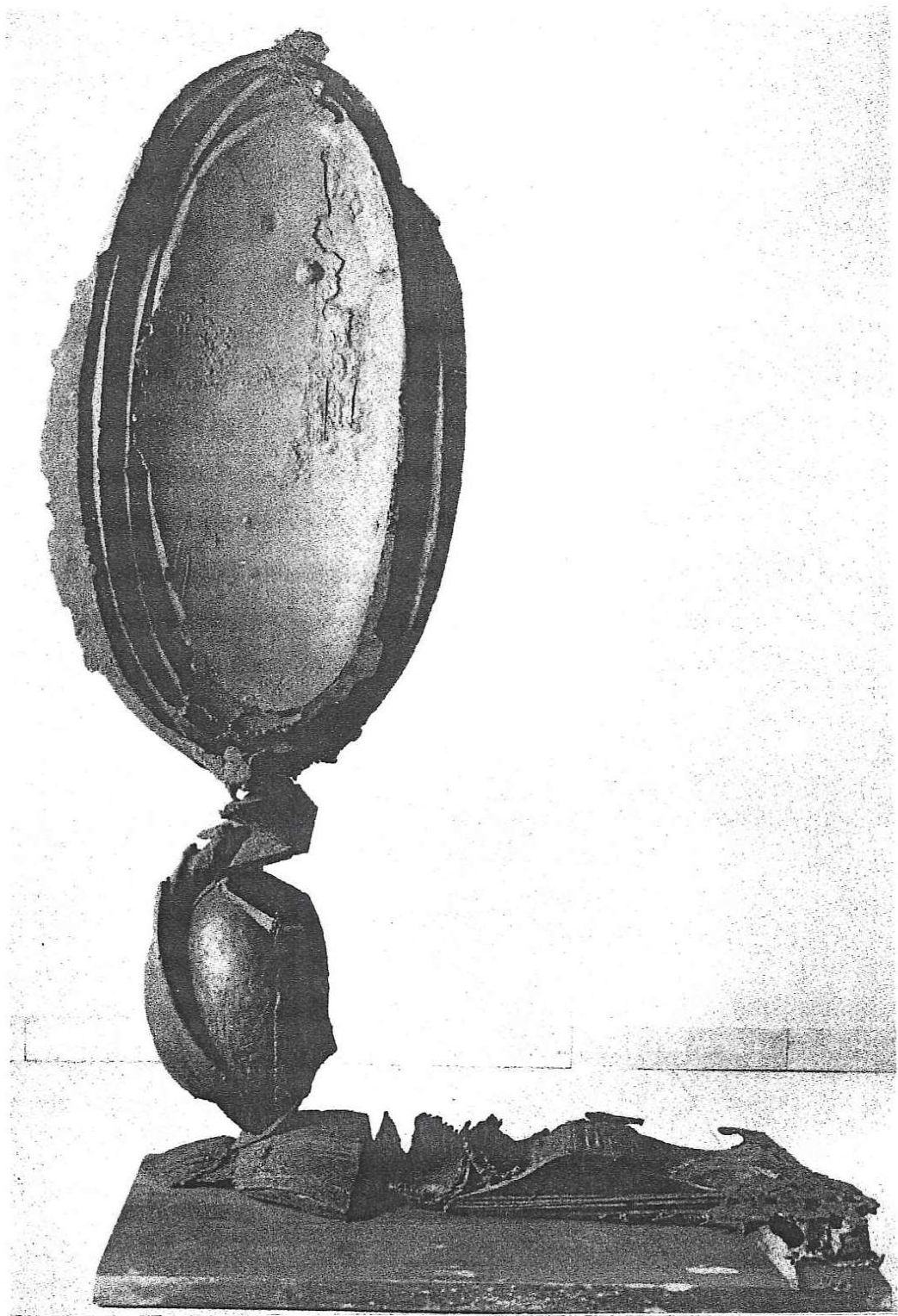
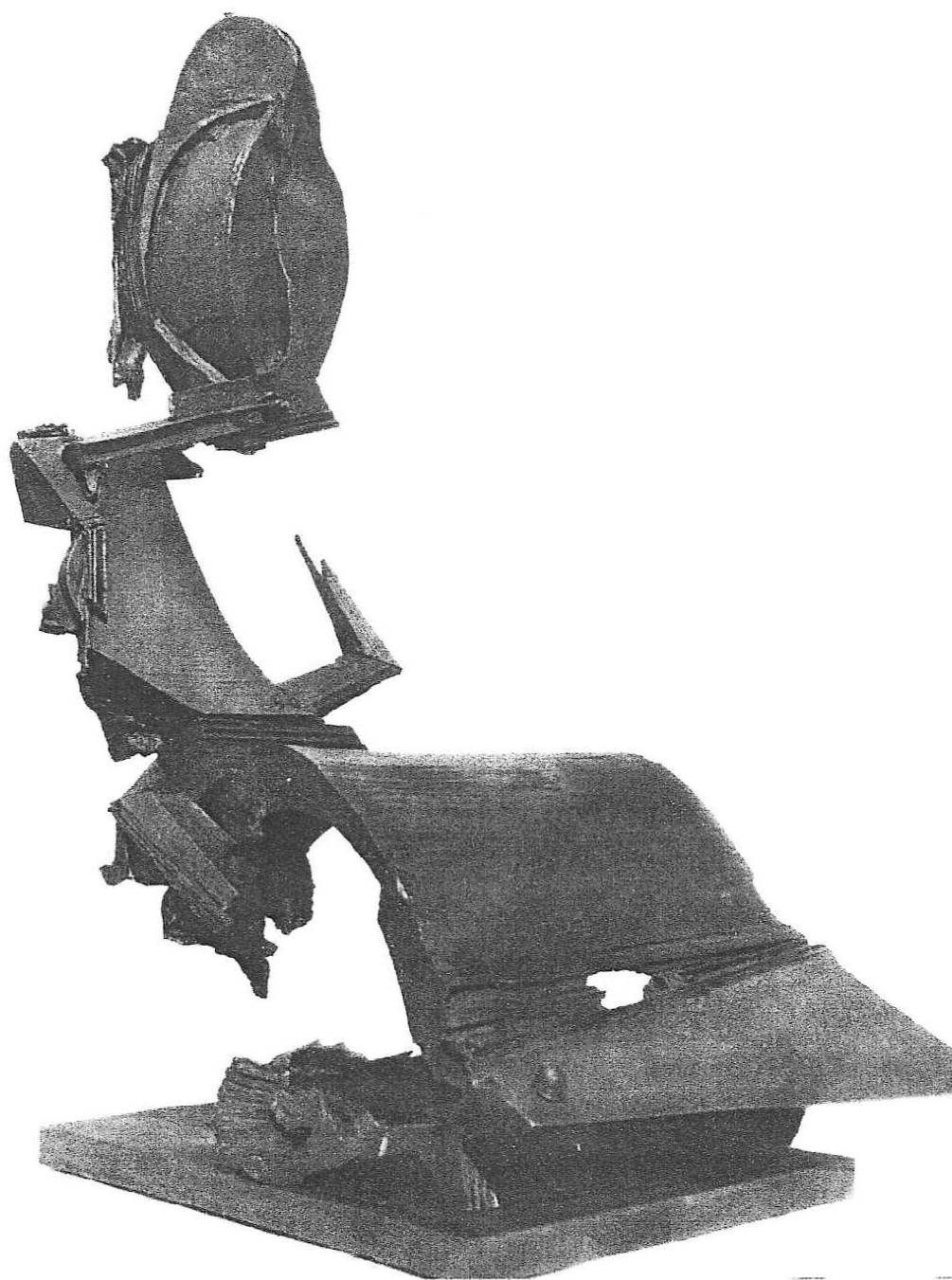


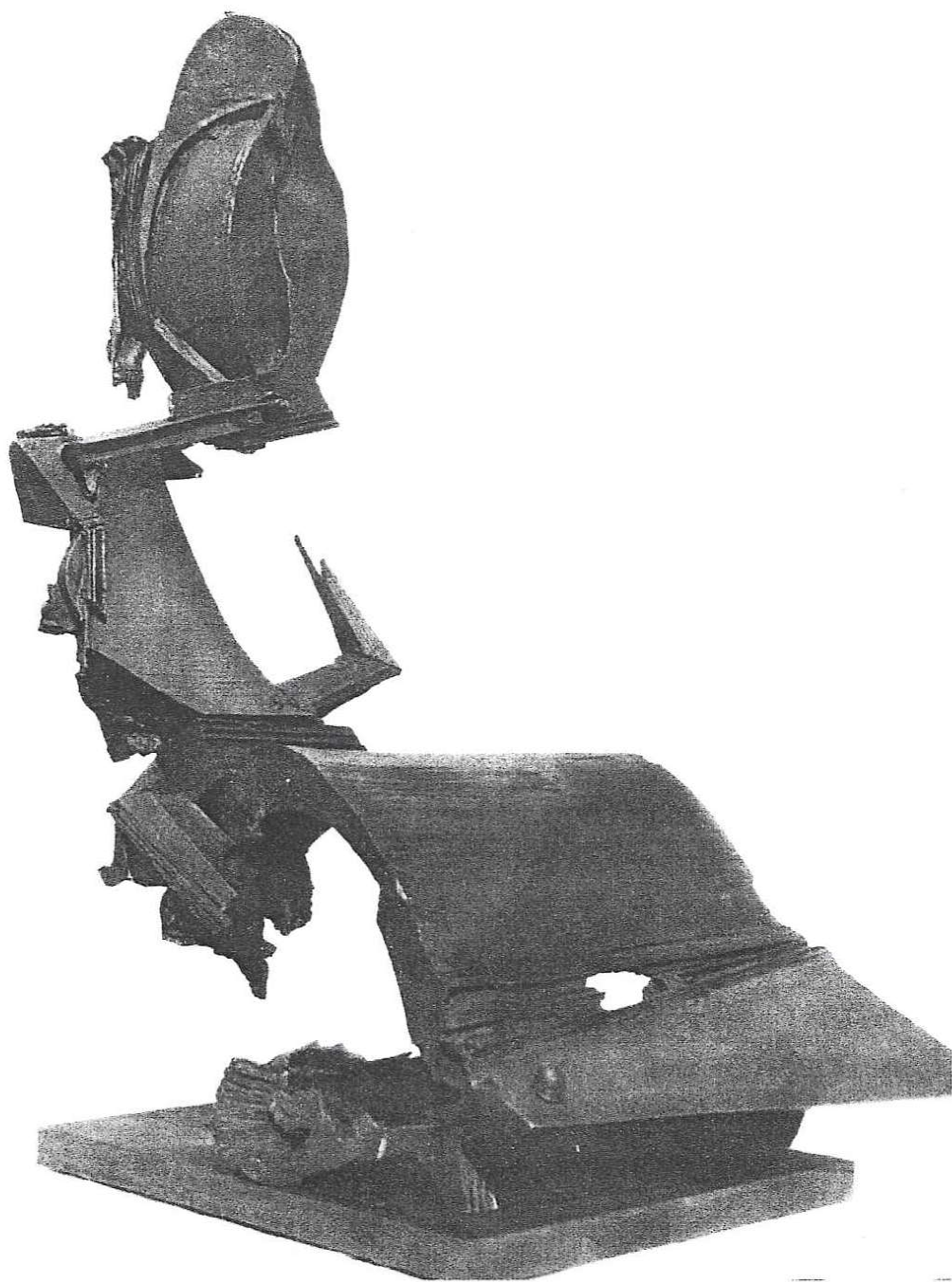
Tav. 39 – **Delta Phoenix**, 1963 bronzo, h. cm. 280, Kunst Museum Aarhus, Danimarca



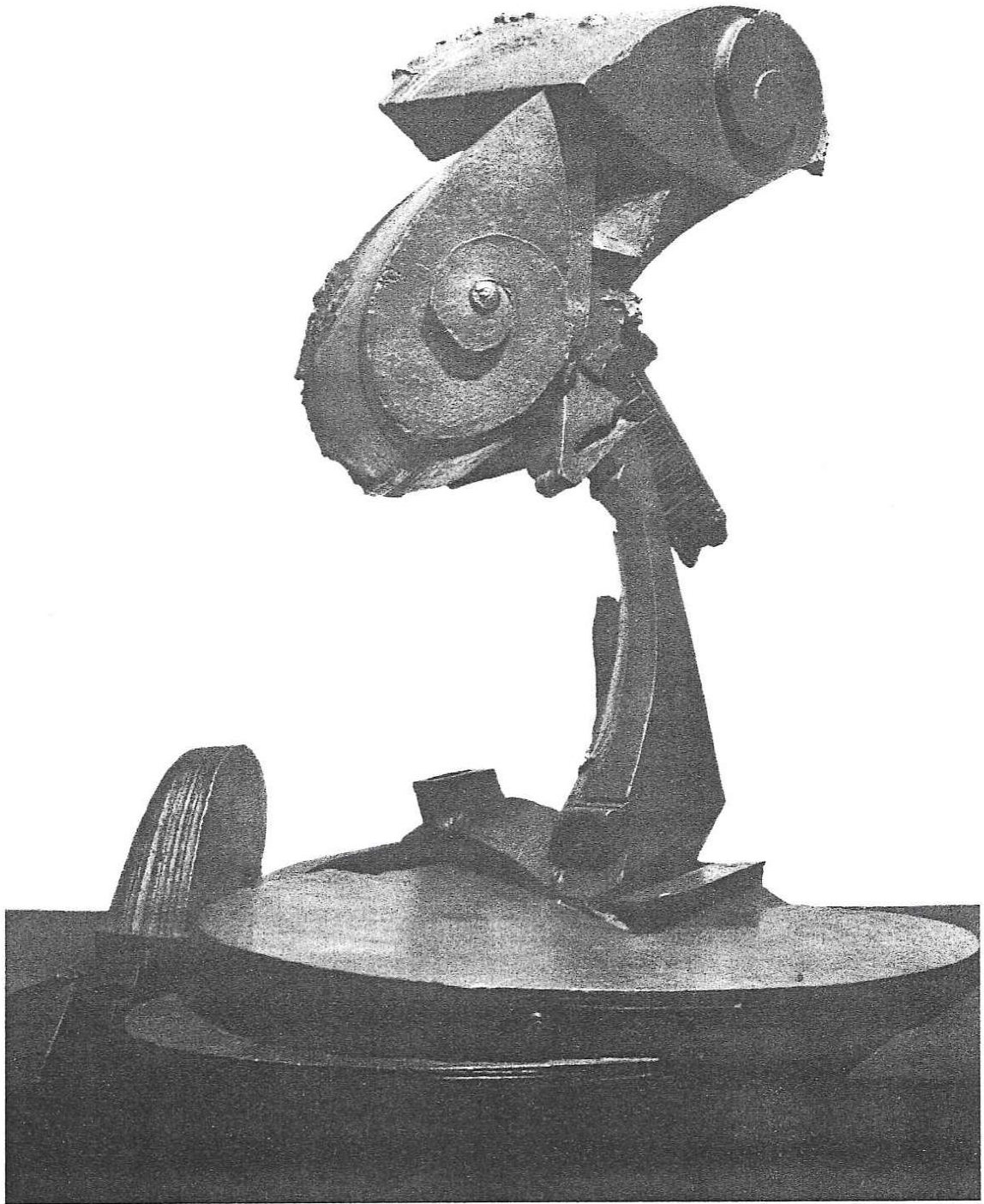
Tav. 40 – **Il sole di Bebra**, 1964 bronzo, h. cm. 150, coll. Giorgio Piacenza, Torino



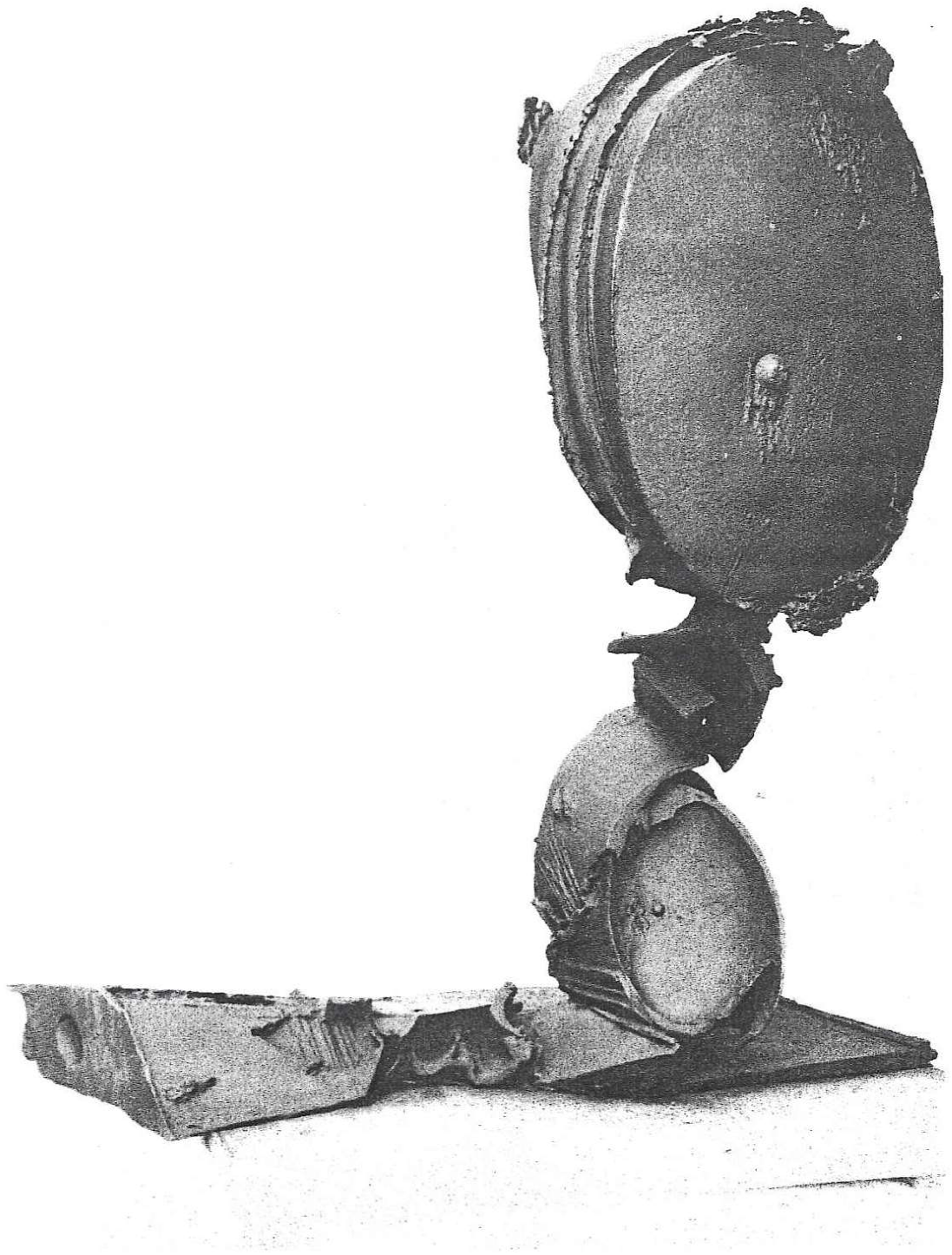
Tav. 41 – Salita al Teo, 1965 bronzo, h. cm. 140



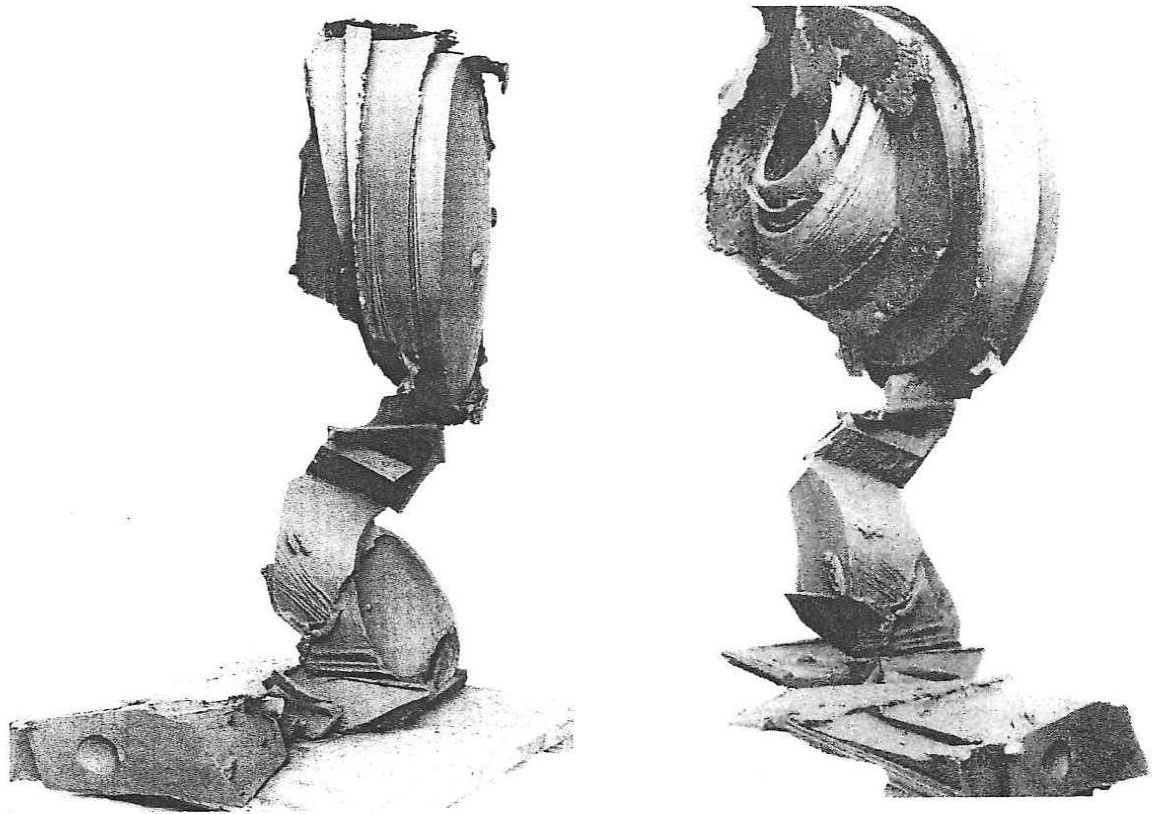
Tav. 41 – Salita al Teo, 1965 bronzo, h. cm. 140



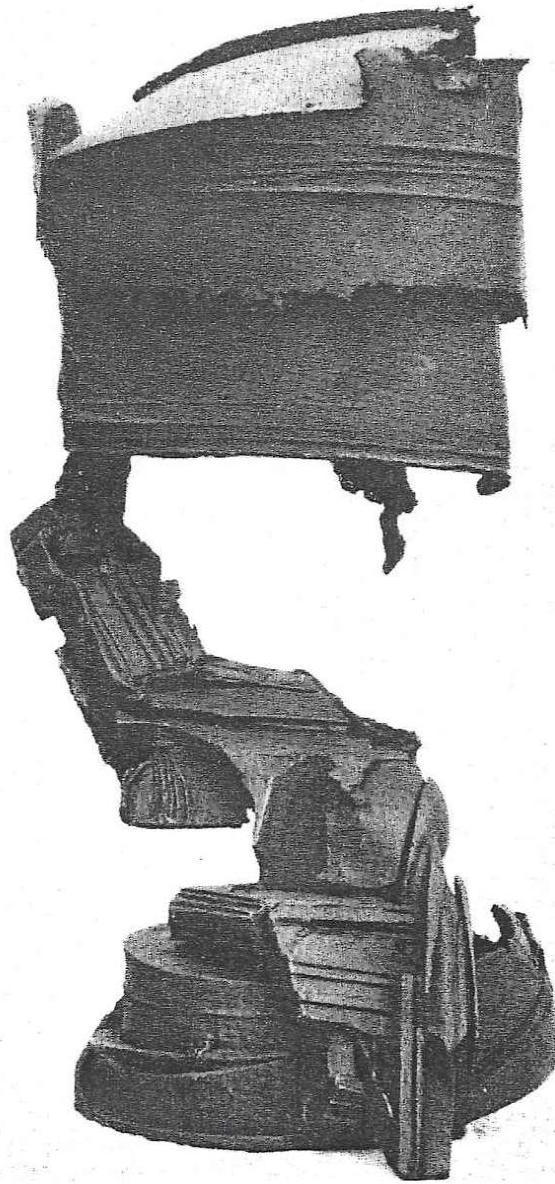
Tav. 42 – Jonica, 1965 bronzo, h. cm. 80, coll. privata, Danimarca



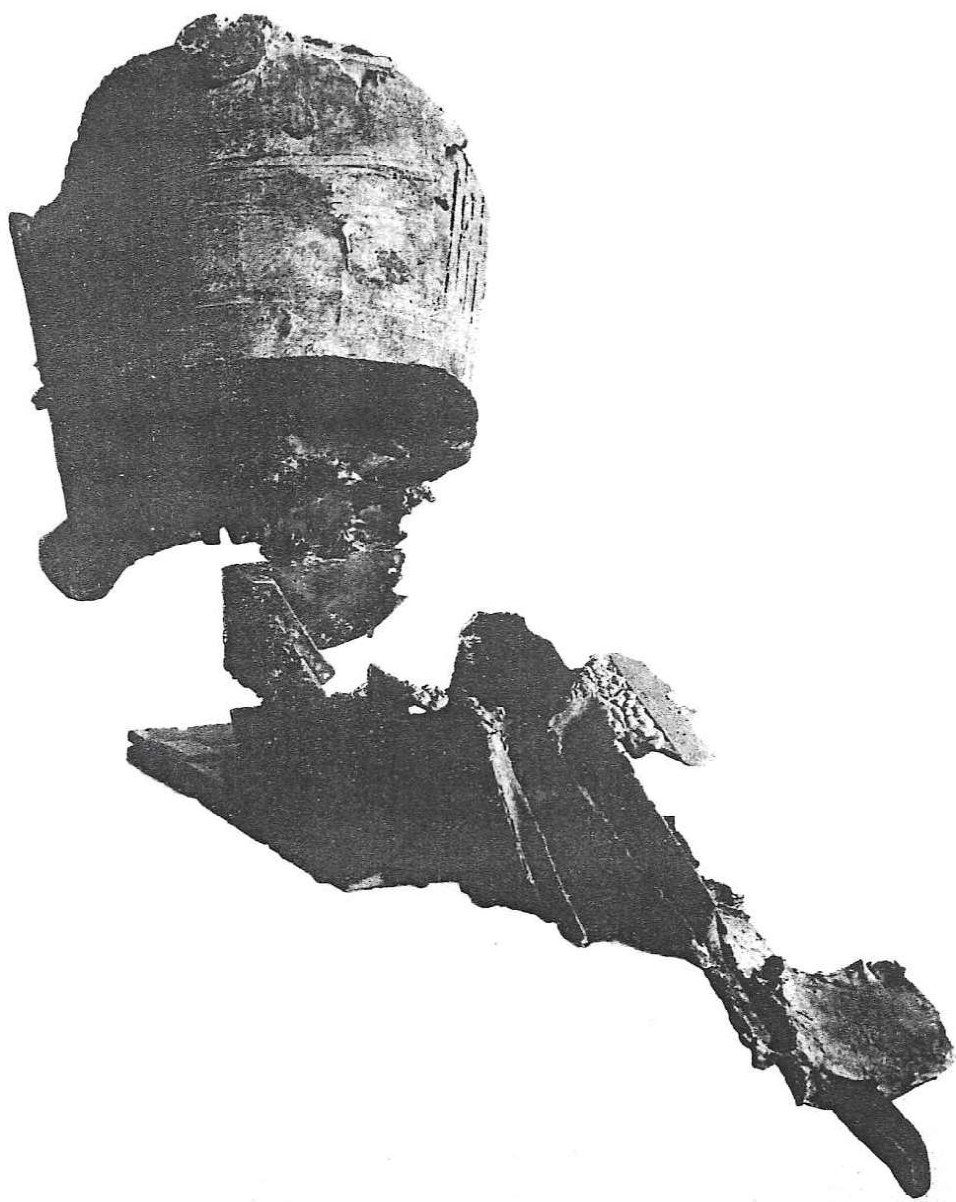
Tav. 43 – Sesto Calende, 1964 bronzo, cm. 110x80



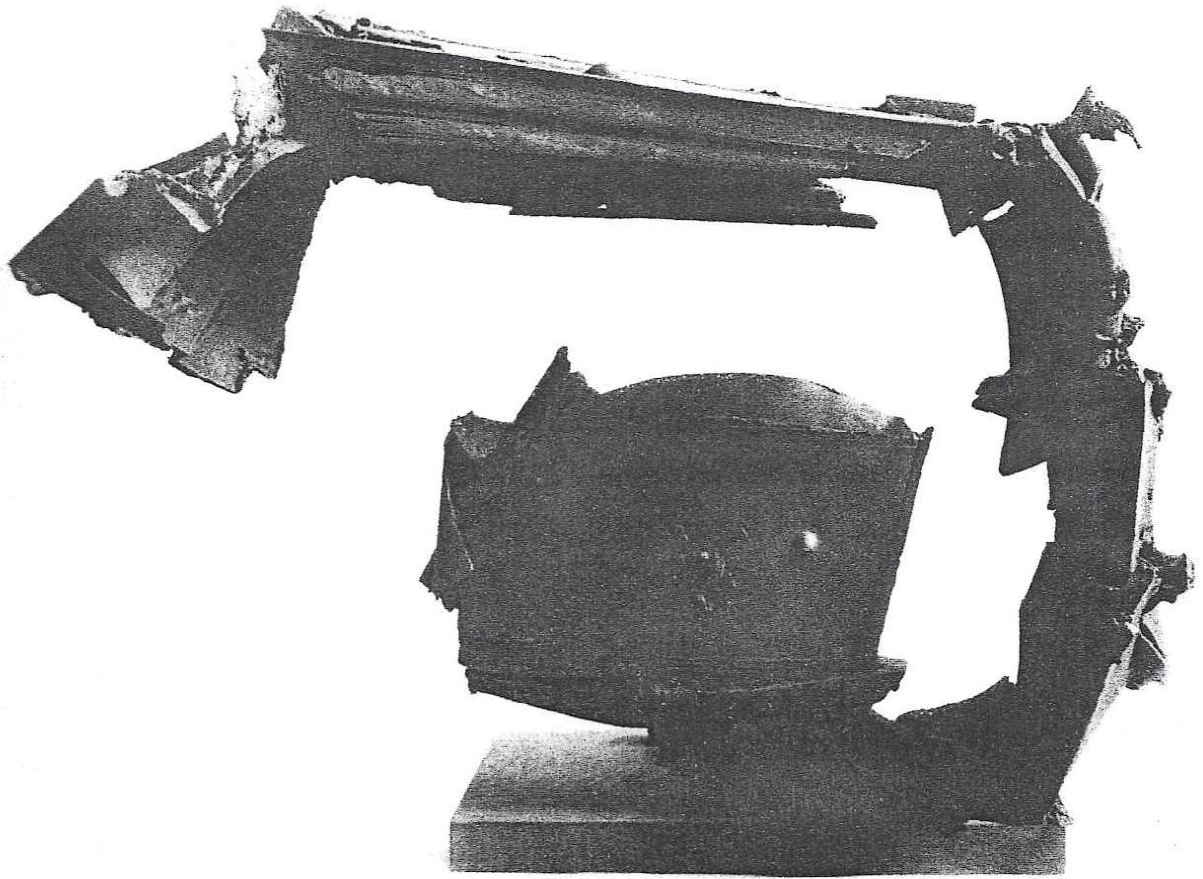
Sesto Calende, 1964 bronzo, cm. 110x80



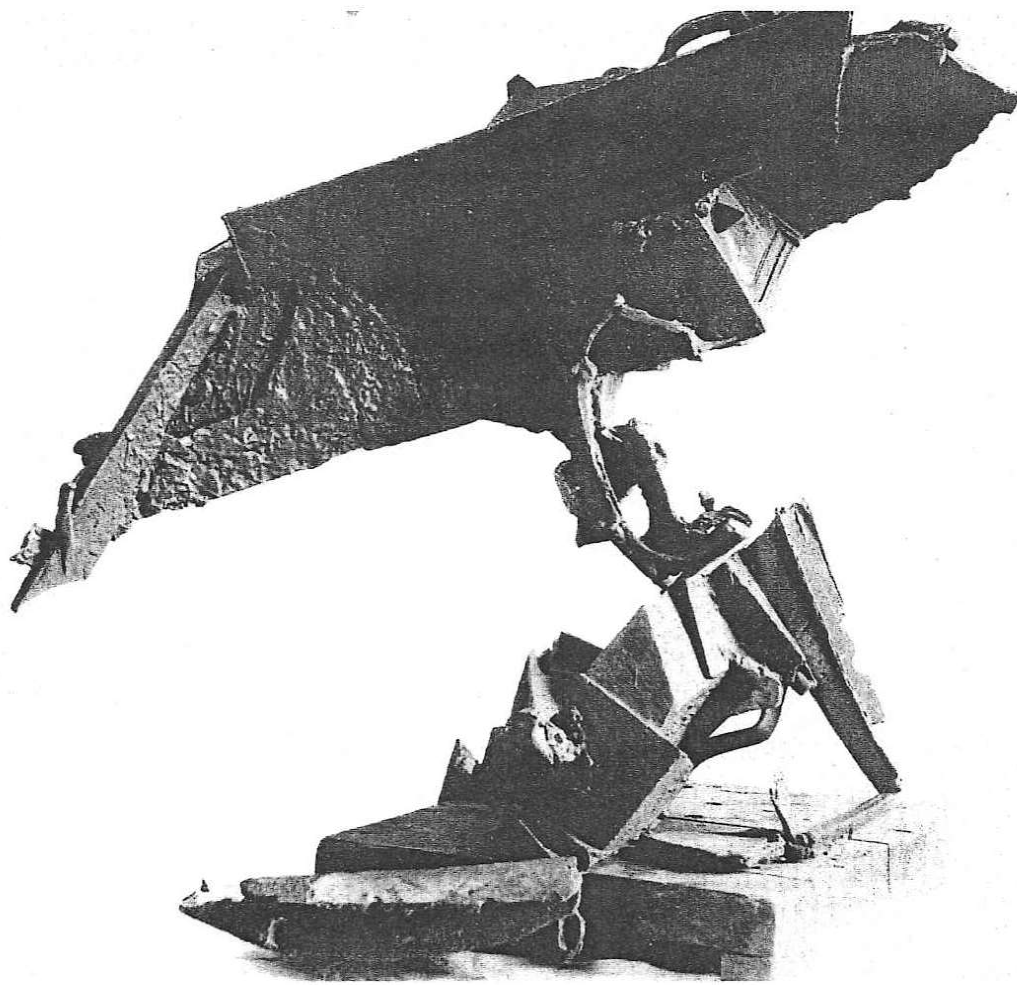
Tav. 44 – **West Crown**, 1964 bronzo, h. cm. 75, Galleria Tunnard & Mc. Roberts, Londra



Tav. 45 – **La lombarda**, 1963 bronzo, cm. 60x90, coll. privata Danimarca



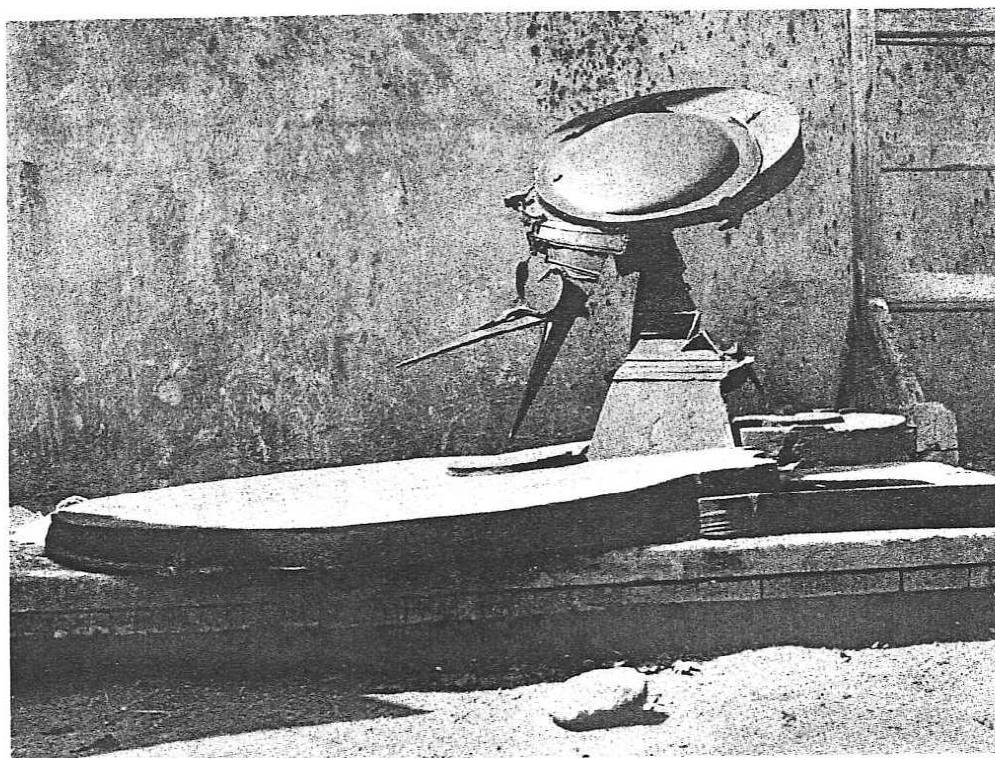
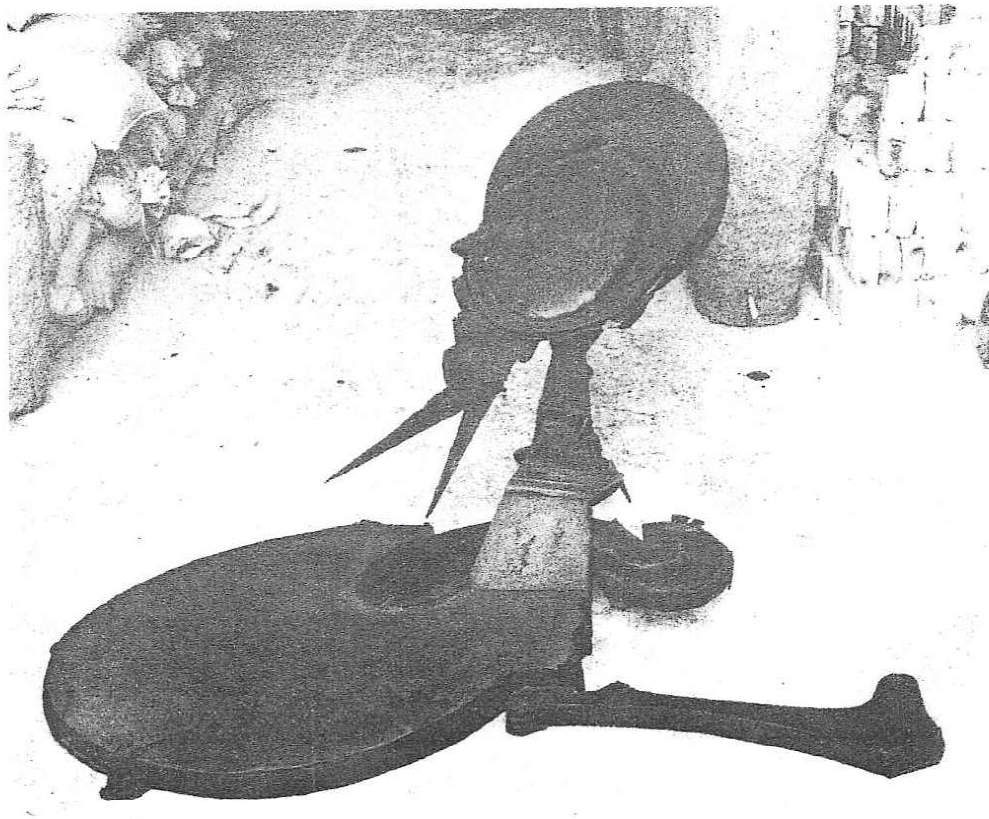
Tav. 46 – **Il suicida e l'arca**, 1965 bronzo, cm. 70x100x60



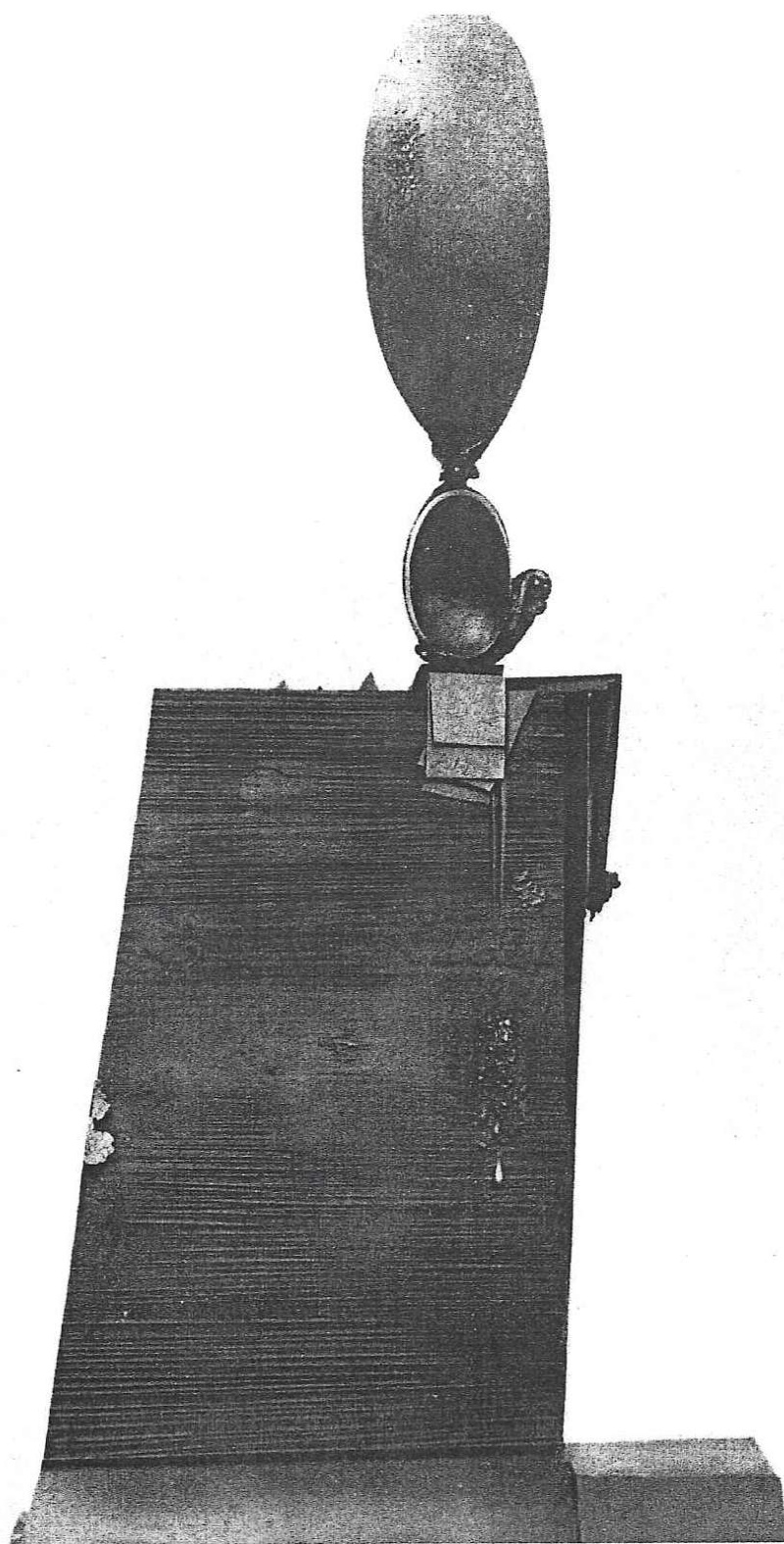
Tav. 47 – Riccione, 1965 bronzo, cm. 70x90x55



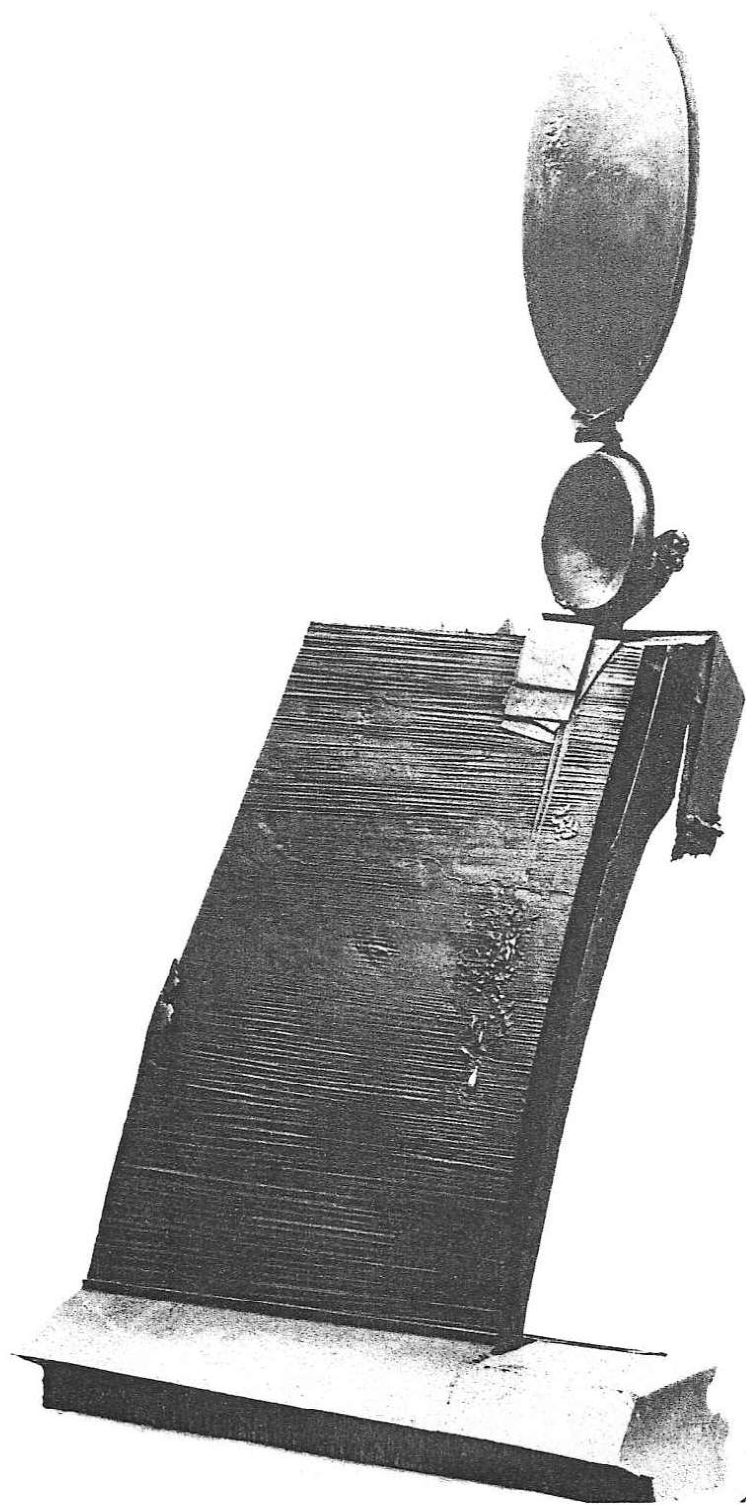
Tav. 48 – Giselda e Timoteo, 1966 bronzo, h. cm. 155, h. cm. 175



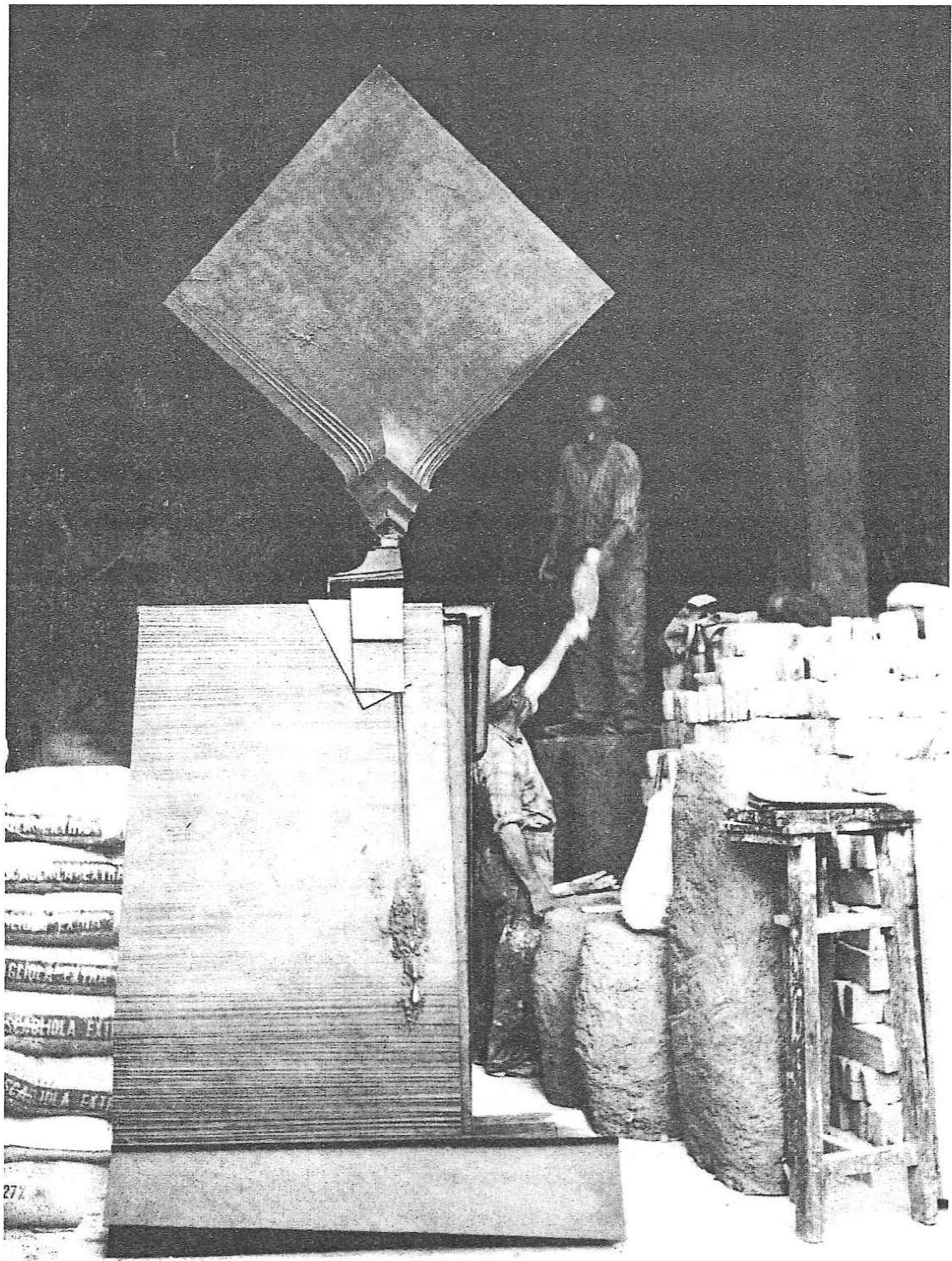
Tav. 49 – Padula peninsulare, 1966 bronzo, cm. 80x170x140



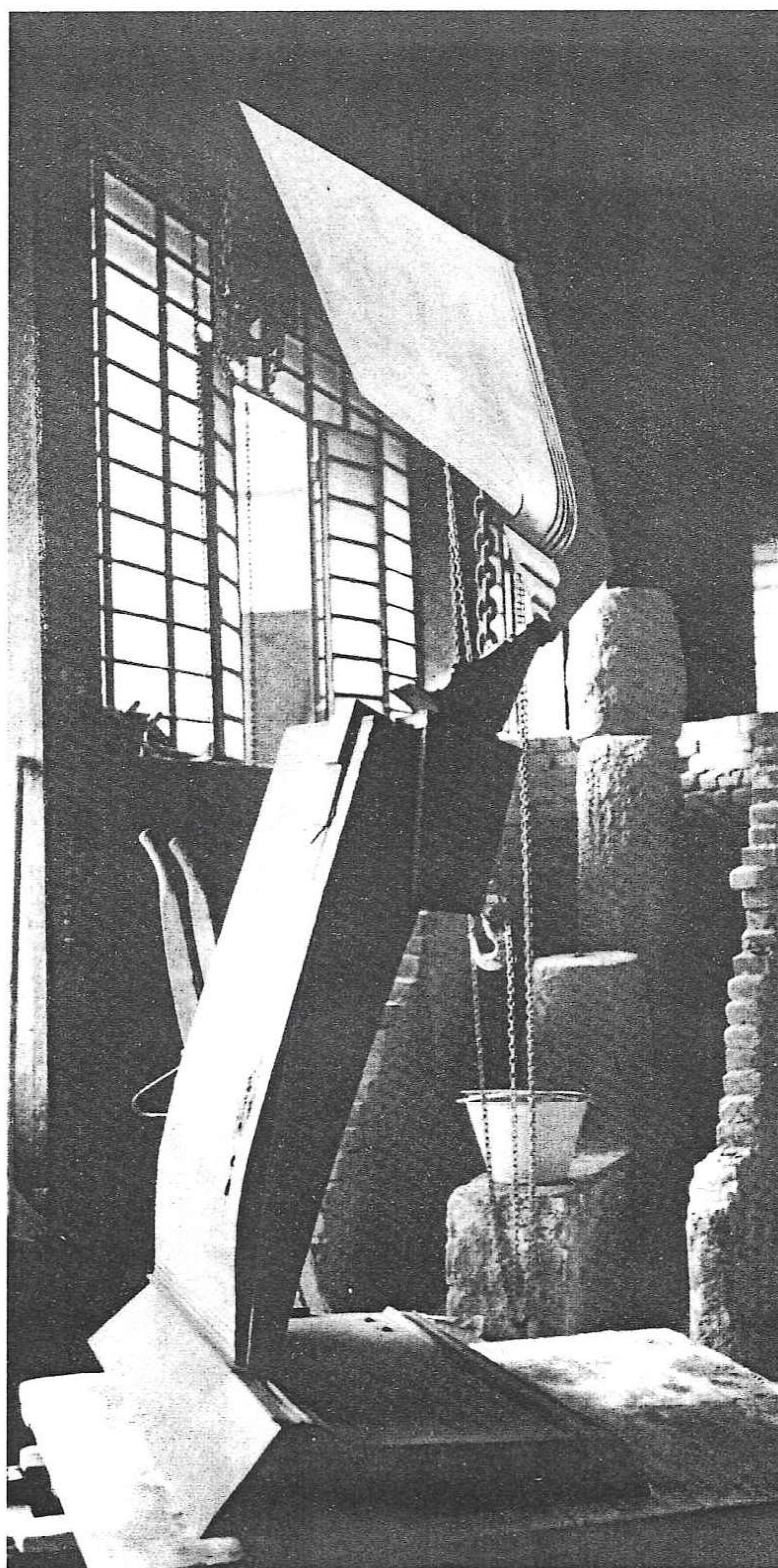
Tav. 50 – **Pepete a piombo**, 1966 bronzo, h. cm. 250, coll. Severi, Modena



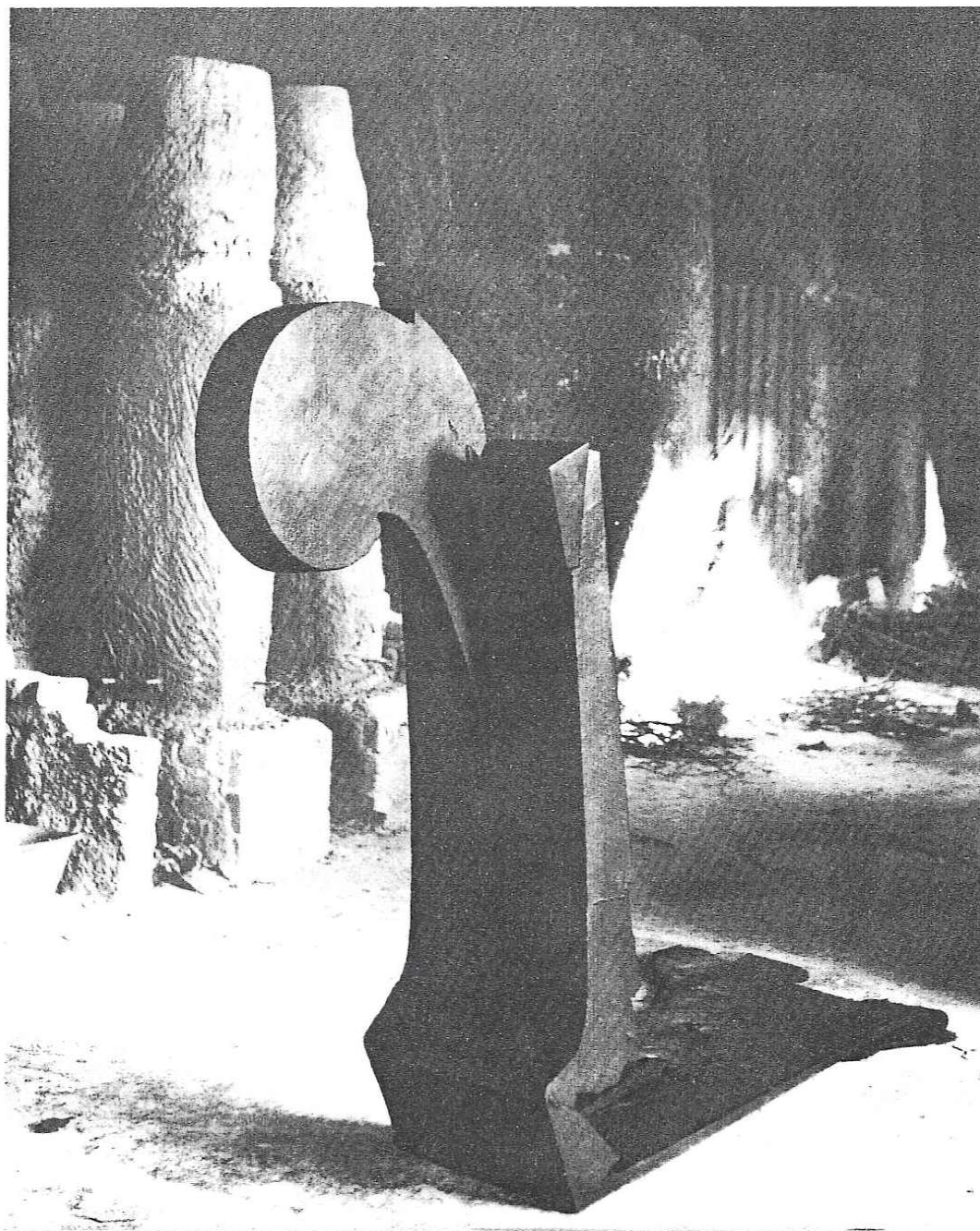
Pepete a piombo, 1966 bronzo, h. cm. 250, coll. Severi, Modena



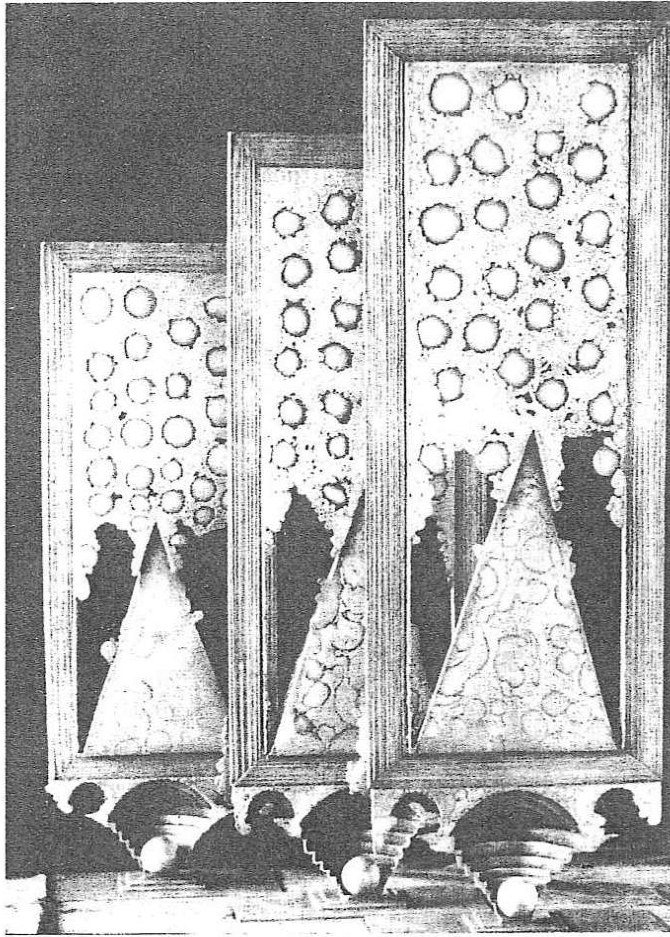
Tav. 51 – Il grande profitto, ovvero: la Salita, il Miro e la Goccia, 1966 bronzo,
h. cm. 273



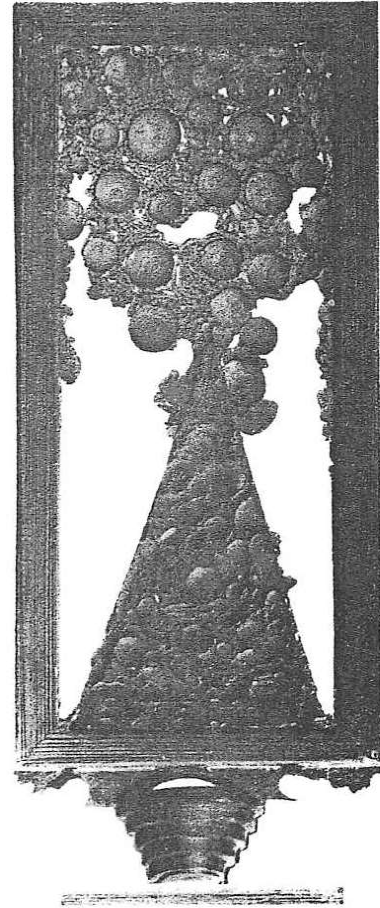
Il grande profitto, ovvero: la Salita, il Miro e la Goccia, 1966 bronzo, h. cm. 273



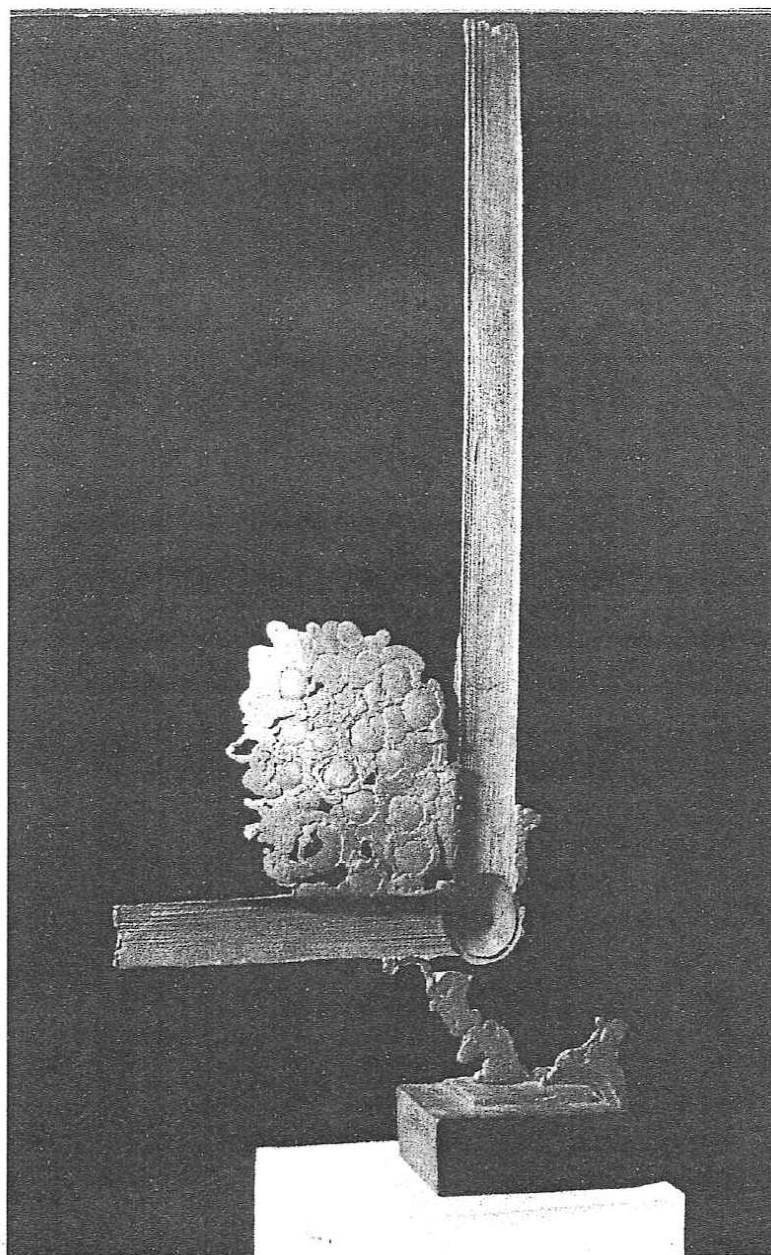
Tav. 52 – Teodoro jonico, 1966 bronzo, cm. 151x210x81



Tav. 53 - Cuccalberi con i pomi della memoria,
1969 bronzo argentato, h. cm. 120



Cuccalbero, 1968 bronzo,
h. cm. 110



Tav. 54 – **Foghlissima**, 1967-68 bronzo, h. cm 130