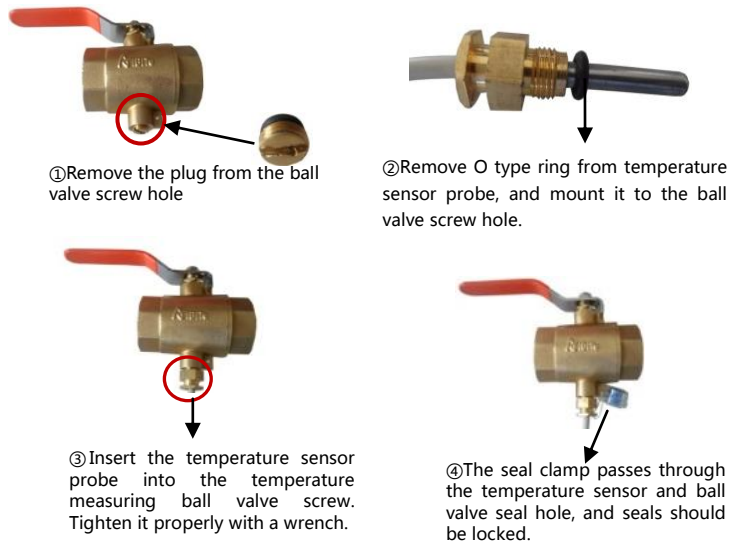


2.5 Temperature sensor installation guide:

Each meter has two temperature sensors, water supply temperature sensor with a red label, and the return water temperature sensor with a blue label. The water supply temperature sensor or the water return temperature sensor is fixed on the flow sensor according to the requirement (forward or return). Only the other temperature sensor needs to be installed as the following steps:



- c. Open the product seal privately ;
- d. Accident factors (transport, collision, etc.) or man-made damage ;
- e. Other damage caused by force majeure such as natural disasters (earthquake, fire etc.) and so on.

(3)After sales service: if the product goes wrong when normal use , please contact the supplier or the Ploumeter sales department, in order to provide you with immediate services.

(4) About battery: the normal depletion cycle of the battery is 10 years, it is recommended to purchase and replace it before the expiration, in order to avoid inaccurate measurement due to battery under voltage.

Important statement: We have tried our best to guarantee the product data reliability in design, but we can't guarantee that there is no problem in all products.

Ploumeter will try to recover the loss data for the customers, which caused by the product breakdown and other reasons. But we won't undertake the losses caused by the measurement data loss. Please read and save measurement data regularly.


5 LCD

The LCD display can be operated with the bottom under the display.

Menu overview

- The A1 menu displays the basic data.
- Menu A2 displays the reference data. These are for example: date, manufacturing number, first level address, etc.
- The monthly cumulative heat and flow value of the first 24 months is displayed in menu A3.
- The statistical data are displayed in the A5 menu.

Note: only the cool-heat meter (for heating, cooling) display "the accumulative amount of cold"

Error Codes	Fault information	Prompt service
err0__	Incorrect meter direction or wrong installation	Checking the flow or mounting direction; correction if necessary
err_1__	negative temperature difference	Check the installation position of the sensor; replace it if necessary
err__2__	Open circuit of water supply temperature sensor	Repair or replacement by professionals
err_3__	Short circuit of water supply temperature sensor	Repair or replacement by professionals
err__4__	Open circuit of return water temperature sensor	Repair or replacement by professionals
err__5__	Short circuit of return water temperature sensor	Repair or replacement by professionals
err__6	Air tube	Pipes do not have water or water not full of the pipe
	Low battery	Need to replace the battery by professional personnel


3 Descriptions of the state of hazardous substances content in products

Component name	Toxic and hazardous substances or elements					
	Lead Pb	mercury Hg	Cadmium Cd	Six valence chromium Cr (VI)	Multi bromine PBB	Two phenyl ether PBDE
complete machine	○	○	○	○	○	○

○ : It indicates that the content of the toxic and hazardous substances in all homogeneous materials of this part doesn't exceed the limits set by the SJ/T11363-2006 standard.
 × : It indicates that the content of the toxic and hazardous substances in one certain homogeneous material of this component exceeds the requirements specified in the SJ/T11363-2006 standard.

Note :

- This table shows that our products may contain these substances, but the information may be updated with the technology development.
- The right to interpret the component definition in this table belongs to our company.
- According to the EU waste electrical and electronic recycling directive 2002/96/EC (WEEE), if you need to scrap the product, you can return it to our company. Ploumeter can dispose of the discarded product. You can also hand it over to the recycling company. Not allowed to be discarded with other living garbage



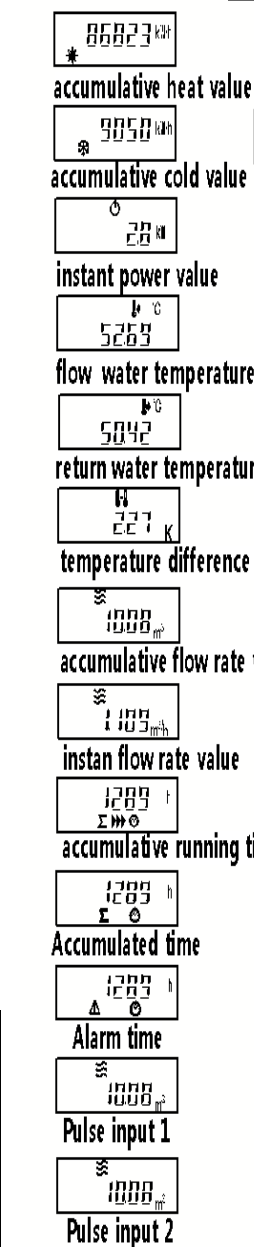
4 Warranty commitment

(1) Free warranty: If the product broke down or didn't work normally, Ploumeter is in charge of the gratis repair or replacement in the premise of intact seal, from the date of your purchase (the formal purchase invoice date). But we won't undertake related charges of the door to door service.

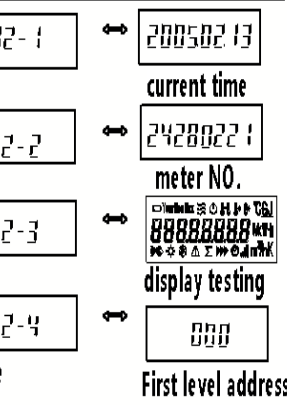
(2) Exempt from warranty obligations: in order to protect your legitimate rights and interests, and avoid unnecessary losses, please notice that our company does not assume warranty obligations to the failure, abnormal operation or damage caused by the following conditions. It needs to pay maintenance cost.

- a. When the product is beyond the warranty period ;
- b. Product damage due to the error use, self dismantling, improper maintenance and other reasons ;

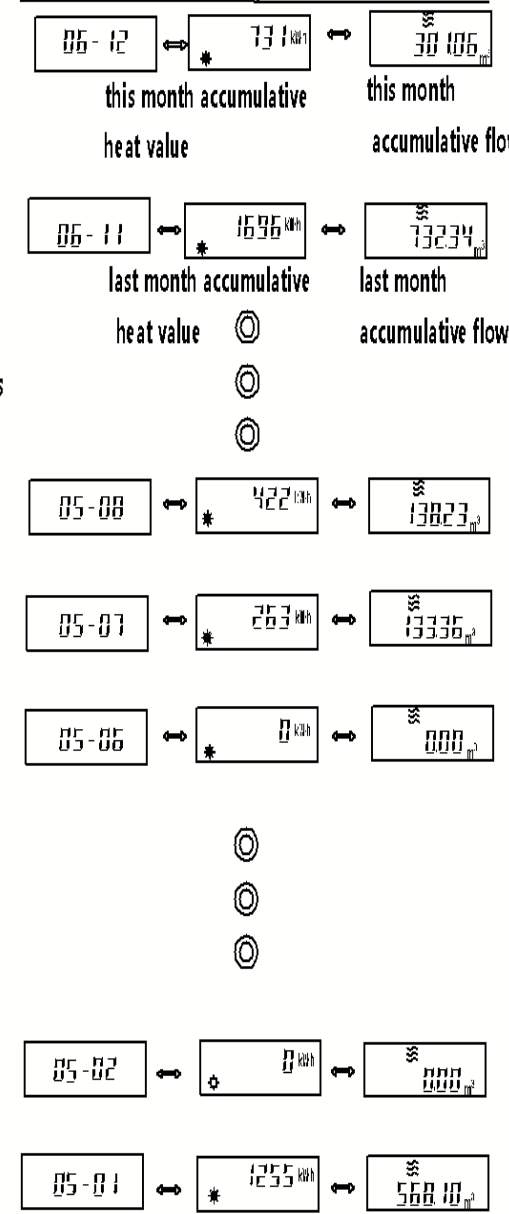
main display menu A1



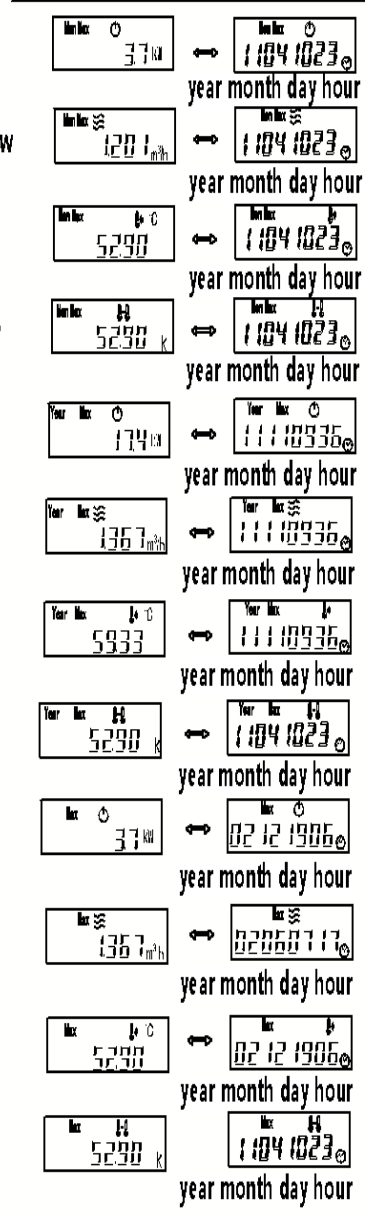
main display menu A2



main display menu A3



display menu A5



Packing list

Name	Model	Number	Remarks
Ultrasonic heat meter	RC82	1	*
Instructions		1	
Declaration of conformity		1	

*Expressed as the main component