

Air Type, Shouldered

Silicon nitride
(Si₃N₄)

M6

Base hole diameter of work: $\phi 7$

Model No.	H	L	Qty.
PND-A6-6.9-4.5-GS	4.5	24.5	1

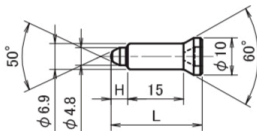
P5-105 ~

Please use it with Air Cap (PN-C~) in combination.

But Spring Cap (PNS-C~) is not available

RM-15

Examples of combination of Lower Electrodes for Nut Welding.



G-guide Pin

G-guide Pin is ceramic guide pin chiefly made of silicon nitride.

- It is very hard, and highly resistant to high temperatures.
- It provides excellent electrical isolation, no electrical corrosion, and long life.
- No spatter adhesion. Prevents nuts from sticking.
- Resource saving!! Cost saving!! Stabilizing weld quality!! Increasing operation efficiency!!

